

# 450-48.A.

## Manual of General Design Guidelines

---

West Bradford Township, Chester County, Pennsylvania



Village of Marshallton: TND-2 District

A companion document to Article VIII: Traditional Neighborhood Development - 2 (TND 2) of the West Bradford Township Zoning Ordinance, providing Written and Graphic Design Guidelines to complement Section 450-48. "General design guidelines" of Article VIII.

September 2, 2005

Adopted: December 13, 2005

Proposed Amendments: November 26, 2008

Proposed Amendments Revised: March 11, 2009

Adopted: November 24, 2009

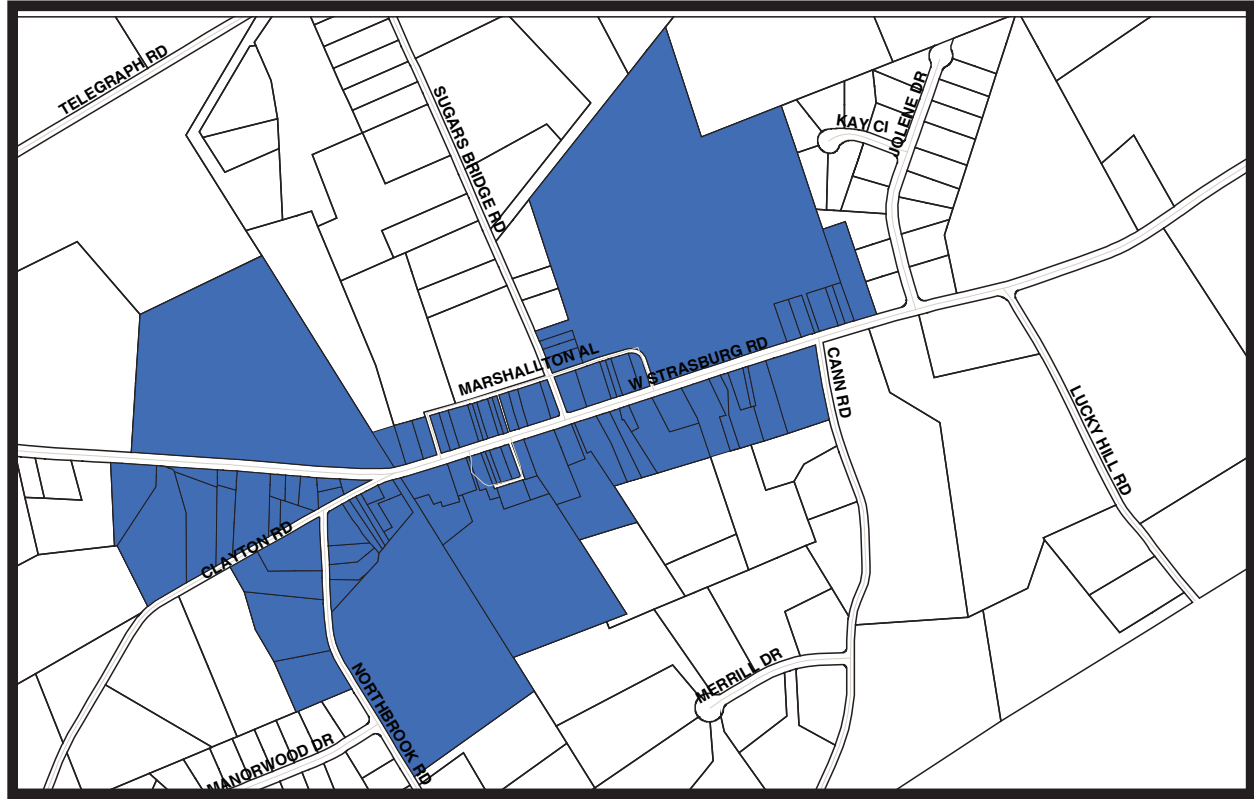
**Proposed Amendments Revised: August 30, 2018; March 5, 2019; May 7, 2019; June 4, 2019;  
July 31, 2019; September 10, 2019; October 1, 2019; October 8, 2019;  
October 9, 2019; October 22, 2019**

450-45.A.

# Manual of General Design Guidelines

---

West Bradford Township, Chester County, Pennsylvania



Village of Marshallton: TND-2 District

Prepared by:

Thomas Comitta Associates, Inc.  
Town Planners & Landscape Architects

September 2, 2005

Adopted: December 13, 2005

Proposed Amendments: November 26, 2008

Proposed Amendments Revised: March 11, 2009

Adopted: November 24, 2009

**Proposed Amendments Revised: August 30, 2018; March 5, 2019; May 7, 2019; June 4, 2019;  
July 31, 2019; September 10, 2019; October 1, 2019; October 8, 2019;  
October 9, 2019; October 22, 2019**

<b>TABLE OF CONTENTS</b>	<b>Page No.</b>
<b>450-48.A.1.</b> Introduction	1
<b>450-48.A.2.</b> Applicability	2
<b>Streetscape Guidelines</b>	<b>i</b>
<b>450-48.A.3.</b> Alley	3
<b>450-48.A.4.</b> Curbs	4
<b>450-48.A.5.</b> Curb Cuts	5
<b>450-48.A.6.</b> Gateway Features	6
<b>450-48.A.7.</b> Parking: On-Street	7
<b>450-48.A.8.</b> Sidewalks	8
<b>450-48.A.9.</b> Street Lights	9
<b>450-48.A.10.</b> Street Trees	10
<b>Site Design Guidelines</b>	<b>ii</b>
<b>450-48.A.11.</b> Building Location	11
<b>450-48.A.11.1.</b> Blocks	11.1
<b>450-48.A.12.</b> Build-to-Line/ Setbacks	12
<b>450-48.A.12.1.</b> Building Massing on Lots	
<b>450-48.A.13.</b> Hedges, Fences and Walls	13
<b>450-48.A.14.</b> Landscaping	14
<b>450-48.A.15.</b> Parking: Off-Street	15
<b>450-48.A.16.</b> Signage	16
<b>450-48.A.17.</b> Street Furniture	17
<b>450-48.A.18.</b> Utilities	18
<b>450-48.A.19.</b> Green Areas (Village Green; Civic Plazas and Squares; Pocket Parks; Green Court)	19
<b>Building Design Guidelines</b>	<b>iii</b>
<b>450-48.A.20.</b> Accessory Buildings and Structures	20
<b>450-48.A.21.</b> Adaptive Reuse of Buildings	21
<b>450-48.A.22.</b> Alterations and Additions to Existing Buildings	22
<b>450-48.A.23.</b> Building Design	23
<b>450-48.A.24.</b> Building Facades	24
<b>450-48.A.25.</b> Building Heights	25
<b>450-48.A.26.</b> Building Materials	26
<b>450-48.A.27.</b> Building Scale/Size/Proportion	27
<b>450-48.A.28.</b> Fenestration	28
<b>450-48.A.29.</b> Front Doors/ Entryways	29
<b>450-48.A.30.</b> Porches and Stoops	30
<b>450-48.A.31.</b> New Buildings	31
<b>450-48.A.32.</b> Garage Doors	32
<b>Appendix of Specialized Subjects</b>	<b>A.1</b>
<b>A.2</b> Context Sensitive Uses	A.2
<b>A.3</b> Demolition	A.3
<b>A.4</b> Rehabilitation of Buildings: The Secretary of the Interior's Standards for Rehabilitation	A.4
<b>A.5</b> Definitions	A.5
<b>A.6</b> Excerpts of "Get Your House Right", by Marianne Cusato & Ben Pentreath, 2007	A.6



### **450-48.A.1. Overall Purpose & Intent**

The Overall Purpose of this Manual of General Design Guidelines is to: Integrate the formation of Exterior Spaces through the proximity of Buildings, Built Elements, and Landscape Forms and Features in order to Prioritize the Pedestrian Experience.

This Manual of General Design Guidelines relates to the Zoning Ordinance Amendment originally adopted by the West Bradford Township Board of Supervisors on December 13, 2005 which created the Traditional Neighborhood Development-2 (TND-2) District in the Village of Marshallton. The Intended Purpose of the TND-2 District is as follows:

**450-48.A.1.a.** Encourage the continuation of the traditional character and land use pattern of the Village of Marshallton, as enabled by Article VII-A of the Pennsylvania Municipalities Planning Code titled Traditional Neighborhood Development.

**450-48.A.1.b.** Promote adaptive reuse of buildings in Marshallton, to the maximum extent possible.

**450-48.A.1.c.** Discourage the demolition of existing viable buildings.

**450-48.A.1.d.** Promote Traditional Neighborhood Development that is compact and context sensitive, whenever new development or redevelopment takes place.

**450-48.A.1.e.** Encourage development and redevelopment to be in keeping with the scale, height, proportions, and overall pattern of the traditional village setting.

**450-48.A.1.f.** Help to ensure compliance with the goals of the Comprehensive Plan and promote innovative designs that contribute to the Village character.

**450-48.A.1.g.** Create a solid to void ratio of buildings along the streetscape to promote light, air, visual enjoyment, and placement, in context with existing Village buildings.

**450-48.A.1.h.** Create a context-sensitive composition of buildings along the streetscape to promote the effective placement of buildings.



Village of Marshallton

**450-48.A.1.i.** Be consistent with the Comprehensive Plan of 2009, and any updates thereto, relative to the protection of historic and scenic values of the Village.

**450-48.A.1.j.** Be consistent with “Creating Connections: Country Paths & Village Sidewalks – A Greenways, Trails, and Gateways Plan for West Bradford Township”, dated June 22, 2004, and any updates thereto.

**450-48.A.1.k.** Be consistent with the Open Space, Recreation, and Environmental Resources Plan of West Bradford Township, dated 1993, and any updates thereto, relative to complementing the village pattern, promoting pedestrian circulation to reinforce the community character, and protecting historic resources.

**450-48.A.1.l.** Beautify and enhance the streetscape with such features as sidewalks, crosswalks street trees, street lights, and signage consistent with the Village setting.

**450-48.A.1.m.** Discourage larger footprint and larger volume buildings that would be disruptive to the character and ambience of the Village and increase impervious areas.

**450-48.A.1.n.** This Manual of Design Guidelines is intended to be a general guide for development and redevelopment under Article VIII, the TND-2 District. A more detailed, “Specific Manual of Design Guidelines” shall be prepared by Applicants according to Section 450-45.E. and Section 450-48. of the TND-2 District Ordinance, and Building Design Section of these Design Guidelines.

## **450-48.A.2**

### **Applicability of General Design Guidelines**

**450-48.A.2.a.** This Manual of General Design Guidelines, including “Get Your House Right”, especially the excerpts in the Appendix starting on page A.6., applies to all properties shown on the Township Zoning District Map with the designation of TND-2. This Manual is a companion to Article VIII – Traditional Neighborhood Development TND-2 District.



TND-2 Map

**450-48.A.2.b.** This Manual of General Design Guidelines applies to all Subdivision and Land Development applications within the TND-2 District. However, whenever one (1) or more non-residential buildings, and two (2) or more new residential buildings are proposed, a detailed “Specific Manual of Design Guidelines” shall be prepared and submitted by the Applicant for the site.

**450-48.A.2.c.** The detailed “Specific Manual of Design Guidelines”, prepared by the applicant, shall describe and illustrate the specific Streetscape, Site Design, and Building Design Guidelines that will apply to a specific project, in accordance with Article VIII of the TND-2 District Ordinance.

**450-48.A.2.d.** Throughout this document the word “shall” is a requirement, and the word “should” is a preferred option desired by the Township.

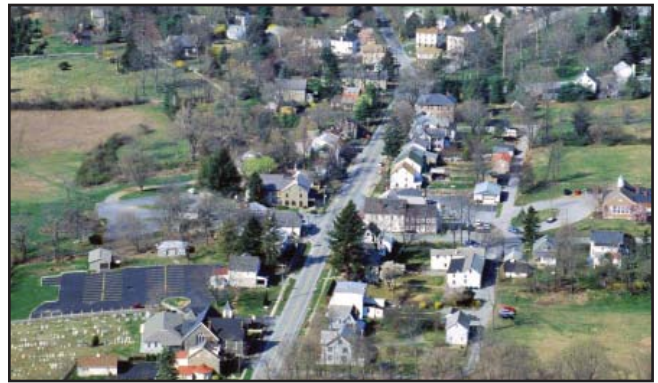
**450-48.A.2.e.** The Procedures for the review of proposed Design Guidelines shall be in accordance with Section 450-52. of the West Bradford Township Zoning Ordinance.

**450-48.A.2.f.** This Manual shall also apply to the redevelopment of lots, as well as development and changes to existing building or buildings when it involves the requirement for a building permit and changes to an existing building or buildings involving features addressed in this Manual of General Design Guidelines, excluding repairs.

## **Streetscape Guidelines**

The Streetscape of the Village of Marshallton is the public space within which buildings are placed close to the street and features such as facades, porches, shopfronts, street trees, street lights, sidewalks, picket fences, low walls, and awnings contribute to a cohesive character. The Streetscape is one of the most important elements of the Village of Marshallton as it frames the view from the road.

The Streetscape is the most visible aspect of the public realm and improves the pedestrian experience throughout the Village. Therefore, all elements that are added to the Streetscape shall enhance, not detract from, the charm and character of the Village.



Marshallton Village Streetscape

Elements addressed in this Section include:

- 450-48.A.3.** Alley
- 450-48.A.4.** Curbs
- 450-48.A.5.** Curb Cuts
- 450-48.A.6.** Gateway Features
- 450-48.A.7.** Parking On-Street
- 450-48.A.8.** Sidewalks
- 450-48.A.9.** Street Lights
- 450-48.A.10.** Street Trees



# 450-48.A.3. Alley

Manual of General Design Guidelines  
West Bradford Township: TND-2 District



Alley of old Grange



Alley at Old Grange

## Legislative Intent

**450-48.A.3.a.**The Alley allows for the preservation of the frontage streetscape, by precluding the need for curb cuts along the frontage.

**450-48.A.3.b.**The Alley provides vehicular access to parking in the rear of lots.

## Guidelines and Best Practices

**450-48.A.3.c.** An interconnected network of streets and alleys shall be created, wherever new streets are constructed.

**450-48.A.3.d.** An alley width of at least 16 feet shall be constructed and maintained, in order to qualify for Liquid Fuel Funds from the State.

**450-48.A.3.e.** All existing Alleys in the Village shall be maintained.

**450-48.A.3.f.** New alleys shall be paved.



Alley at western end of Village



Alley Access to Parking

# 450-48.A.4. Curbs

## Manual of General Design Guidelines

West Bradford Township: TND-2 District



ADA Accessible Curb Cut at Crosswalk



ADA Accessible Curb Cut

### Legislative Intent

**450-48.A.4.a.** Curbs help to contain the sidewalk above on- street parking lanes and shoulders, thereby providing pedestrians and vehicles distinct spaces.

**450-48.A.4.b.** Curbs help to channel vehicular circulation.

**450-48.A.4.c.** Curbs provide opportunities to divert and channelize drainage.

### Guidelines and Best Practices

**450-48.A.4.d.** Curbs shall be installed and maintained on Strasburg Road along all sidewalks.

**450-48.A.4.e.** Concrete curbs shall be installed and maintained with at least a 4.5" vertical reveal along Strasburg Road.

**450-48.A.4.f.** Flush concrete curbs shall be installed and maintained at all curb cuts, along Strasburg Road.

**450-48.A.4.g.** Belgium Block curbs shall be installed and maintained on internal streets, subject to Township approval.

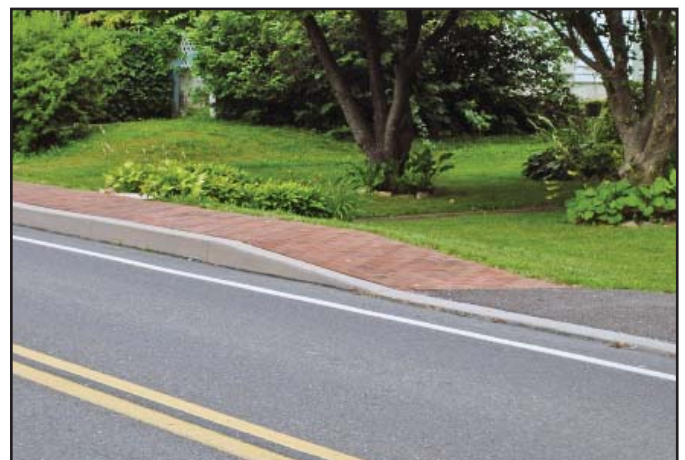
**450-48.A.4.h.** Flush Belgium Block curbs shall be installed and maintained at curb cuts on internal streets.

**450-48.A.4.i.** Handicapped curb cuts shall be installed and maintained at all street intersections.

**450-48.A.4.j.** Curbing to channel drainage shall be installed and maintained.



Belgium Block Curbing



Curb, Sidewalk, and Shoulder



# 450-48.A.5. Curb Cuts

## Manual of General Design Guidelines

West Bradford Township: TND-2 District



Curb Cut for Alley

### Legislative Intent

**450-48.A.5.a.** Curb cuts trigger the need for left turn lanes across oncoming traffic flow.

**450-48.A.5.b.** Mid- block curb cuts should be minimized to reduce conflicting vehicular traffic movements.

**450-48.A.5.c.** Curb cuts are typically not needed when Alleys are constructed and maintained.



Wide Curb Cut for Restaurant

### Guidelines and Best Practices

**450-48.A.5.d.** New mid- block curb cut shall be prohibited

**450-48.A.5.e.** Properties shall be accessed from existing curb cuts, driveways, streets, and alleys.

**450-48.A.5.f.** Corner properties shall be accessed from existing side streets and alleys.

**450-48.A.5.g.** Curb cuts shall be installed and maintained for ADA accessibility at street intersections.

**450-48.A.5.h.** New Alleys shall be installed and maintained to minimize curb cuts along a frontage street.

**450-48.A.5.i.** Excessively wide existing curb cuts shall be narrowed in order to enhance vehicular access management.



Narrow Curb Cut for Residence

# 450-48.A.6. Gateway Features

## Manual of General Design Guidelines

West Bradford Township: TND-2 District



Village Gateway Sign



Eastern Gateway Crosswalk

### Legislative Intent

**450-48.A.6.a.** The Gateway Features of the Village help to provide orientation and enhance wayfinding.

**450-48.A.6.b.** Gateway Features can send the message that you are entering a special place.

**450-48.A.6.c.** Gateways create a “sense of place” and beautify the streetscape.

### Guidelines and Best Practices

**450-48.A.6.d.** Gateway features shall be installed and maintained along the east and west ends of Strasburg Road.

**450-48.A.6.e.** Features such as signage, street lights, street trees, plantings, crosswalks, piers, bollards, sculpture, and banners shall be installed and maintained at Gateways.



Western Gateway



Gateway Pier in Western Gateway Area



# 450-48.A.7. Parking: On-Street

## Manual of General Design Guidelines

West Bradford Township: TND-2 District



On-Street Parking along Strasburg Road



On-Street Parking with Brick Paving

### Legislative Intent

**450-48.A.7.a.** On- street parking is needed where homes and businesses are not served by driveways or alleys.

**450-48.A.7.b.** On- street parking spaces help to buffer fast moving vehicles from pedestrians on the sidewalk.

### Guidelines and Best Practices

**450-48.A.7.c.** On-street parking shall be installed and maintained along alternating sides of new streets to the maximum extent possible.

**450-48.A.7.d.** “End lines” shall be line striped every 22 feet for parallel, on-street parking.

**450-48.A.7.e.** On-street parking bays shall be 7 feet in width.

**450-48.A.7.f.** On-street parking with loading / unloading zones or new curb cuts shall not be eliminated.

**450-48.A.7.g.** Brick paving for on-street parking shall be installed and maintained where possible.

**450-48.A.7.h** Curb bulbouts/planted areas shall be installed and maintained where possible to enhance on-street parking, and create scuppers for drainage along curb lines to help channel stormwater.



On-Street Parking Area with Brick Paving



# 450-48.A.8. Sidewalks

## Manual of General Design Guidelines

West Bradford Township: TND-2 District



Brick Sidewalk/Walkway

### Legislative Intent

**450-48.A.8.a.** Sidewalks add to the pedestrian vitality of the Village.

**450-48.A.8.b.** Sidewalks are critical on both sides of the street.



Brick Sidewalk Detail

### Guidelines and Best Practices

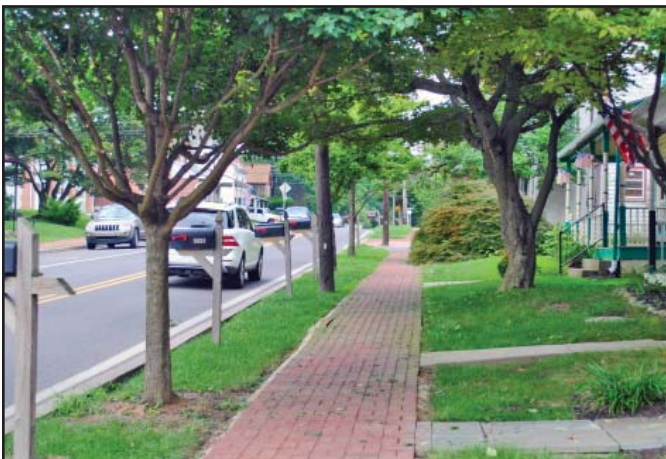
**450-48.A.8.c.** Existing sidewalks shall be maintained on both sides of the street.

**450-48.A.8.d.** New brick sidewalks at a minimum width of 4 feet, 6 inches (4'-6") shall be installed and maintained.

**450-48.A.8.e.** Sidewalk material shall be continuous across curb cuts to emphasize pedestrian continuity.

**450-48.A.8.f.** All sidewalks shall have positive drainage.

**450-48.A.8.g.** Vegetation shall be planted and maintained so as to not encroach on sidewalks.



Tree-lined Sidewalk providing shade for pedestrians



Brick Sidewalk

# 450-48.A.9. Street Lights

## Manual of General Design Guidelines

West Bradford Township: TND-2 District



Street Lights at residence along Strasburg Road



Street Light at residence along lane to Bradford Friends Meeting

### Legislative Intent

**450-48.A.9.a.** Pedestrian scaled street lights can provide an attractive accent to the nighttime streetscape.

**450-48.A.9.b.** Street lights can accent gateways.

**450-48.A.9.c.** Street lights can help to define the Village at night, and help to provide safety for pedestrians and motorists.

### Guidelines and Best Practices

**450-48.A.9.d.** Ornamental pedestrian scaled street lights shall be installed and maintained on both sides of new streets at intervals of 100 feet. The interval between Streetlights may be modified based upon recommendations by the Design Review Committee, relative to spacing considerations pertaining to site conditions.

**450-48.A.9.e.** The height of ornamental street lights shall be a maximum of 16 feet.

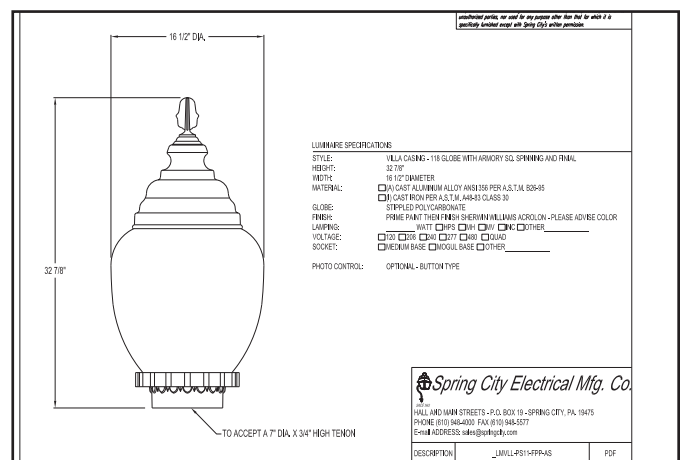
**450-48.A.9.f.** The luminaire shall be installed and maintained to limit light migration, glare and pollution.

**450-48.A.9.g.** Sodium lamps that produce a yellow-orange light shall not be permitted.

**450-48.A.9.h.** The use of varied posts and luminaire styles shall be encouraged for private residential street lights.



Spring City Company Luminaire (Villa model) to be utilized along the Streetscape



Spring City Company Luminaire (Villa model)

# 450-48.A.9. Street Lights (cont.)

Manual of General Design Guidelines  
West Bradford Township: TND-2 District

This drawing is property of Spring City Electrical Mfg. Co. and is loaned to the recipient with the understanding that it shall not be copied, duplicated, passed on to unauthorized parties, nor used for any purpose other than that for which it is specifically furnished except with Spring City's written permission.

**LUMINAIRE SPECIFICATIONS**

STYLE:	WASHINGTON LED
HEIGHT:	44"
WIDTH:	16 1/2" DIAMETER
MATERIAL:	CAST ALUMINUM ALLOY ANSI 356 PER A.S.T.M. B26-95
FINISH:	POWDER COAT - RIVER TEXTURE GLOSS BLACK
GLOBE:	CLEAR STIPPLED ACRYLIC
LAMPING:	60 WATT LED
VOLTAGE:	ELECTRONIC 120-277 VOLTS
COLOR TEMP:	3000K (WARM WHITE)
DISTRIBUTION:	TYPE III (ASYMMETRIC)
SURGE:	10KV
CATALOG NO.:	ALMWSH-LE060/EVX/X2-30-CR3-YS11-FPA-CU

**LAMP POST SPECIFICATIONS**

STYLE:	WASHINGTON WITH DC TOP
HEIGHT:	12'-0"
PHOTOMETRIC CENTER:	14'-0"
BASE:	17" DIAMETER
MATERIAL:	ONE PIECE, CAST DUCTILE IRON PER A536-84 GRADE 65-45-12
FINISH:	POWDER COAT - RIVER TEXTURE GLOSS BLACK
ACCESS DOOR:	ACCESS DOOR LOCATED IN BASE WITH TAMPER PROOF HEX SOCKET SECURITY MACHINE SCREWS
GROUND PROVISIONS:	DRILL AND TAP INSIDE WALL OF BASE OPPOSITE ACCESS DOOR TO ACCOMMODATE A 1/4"-20 GROUND STUD (STUD SUPPLIED BY OTHERS)
ANCHOR BOLTS:	(4) 3/4" X 2 1/4" X 3" HOOK (FULLY GALVANIZED WITH 1 GALVANIZED NUT AND 1 GALVANIZED WASHER PER BOLT)
BOLT PROJECTION:	3" REQUIRED
TENON:	3 1/2" DIA. X 3" HIGH (TO ACCEPT LUMINAIRE)
CATALOG NO.:	DPSWSH-17-12.00-TN3.503.00-DC-CU

**WARRANTY INFORMATION:**

ONE PIECE CAST DUCTILE IRON BASE PROTECTED BY SPRING CITY'S 25 YEAR WARRANTY.

SPRING CITY WARRANTIES ITS DUCTILE IRON BASES TO BE FREE FROM DEFECTS IN MATERIALS AND WORKMANSHIP UNDER NORMAL USE AND OPERATION FOR 25 YEARS. NORMAL USE INCLUDES DAMAGE RESULTING FROM MOTOR VEHICLE COLLISIONS.

LED LUMINAIRE, LED DRIVER, AND LED ARRAYS PROTECTED BY SPRING CITY'S 10 YEAR WARRANTY

SPRING CITY WARRANTIES ITS LED LUMINAIRE, LED DRIVER, AND LED ARRAYS TO BE FREE FROM DEFECTS IN MATERIALS AND WORKMANSHIP UNDER NORMAL USE AND OPERATION FOR 10 YEARS. A SINGLE LED FAILURE SHALL BE REPLACED UNDER THE WARRANTY TERMS.

PLEASE [WWW.SPRINGCITY.COM](http://WWW.SPRINGCITY.COM) FOR FULL WARRANTY DETAILS.

PLEASE NOTE: PRODUCT MUST MEET PENN DOT PUBLICATION 408 AND BULLETIN 15 STANDARDS AND REQUIREMENTS

**Spring City Electrical Mfg. Co.**  
HALL AND MAIN STREETS - P.O. BOX 19 - SPRING CITY, PA. 19478  
PHONE (610) 948-4000 - FAX (610) 948-5877 - [WWW.SPRINGCITY.COM](http://WWW.SPRINGCITY.COM)

<b>DESCRIPTION</b>			
<b>CUSTOMER</b>			
<b>JOB</b>			
<b>SCALE</b>	<b>DRAWN BY:</b>	<b>DATE</b>	<b>DRAWING NO.</b>
N.T.S.	W.R.W.	07-05-18	S104301

450-48.A.9.i. Street Lights shall be “Washington” model LED Luminaire from Spring City Electrical Mfg. Co. in a black finish, or approved equal.



# 450-48.A.10. Street Trees

## Manual of General Design Guidelines

West Bradford Township: TND-2 District



Street Trees along Strasburg Road

### Legislative Intent

**450-48.A.10.a.** Street Trees provide shade, add a vertical scale element to the streetscape, and beautify the public realm.

**450-48.A.10.b.** Deep-rooted, stress tolerant Street Trees have a longer survival rate.

**450-48.A.10.c.** The Village historically has large deciduous Street Trees along its main thoroughfares, mixed with newer smaller Street Trees.



Street Trees along Sidewalk

### Guidelines and Best Practices

**450-48.A.10.d.** Existing Street Trees shall be maintained in the TND-2 District.

**450-48.A.10.e.** Street Trees shall be installed and maintained at an average interval of 35 feet on both sides of Strasburg Road, where there are no existing Street Trees.

**450-48.A.10.f.** Street Trees shall be installed and maintained along all new streets.

**450-48.A.10.g.** Species included in Appendix E.1. of the West Bradford Township Subdivision and Land Development Ordinance, such as: 1) *Acer rubrum* - Red Maple; 2) *Platanus acerifolia* - Sycamore; and/or 3) *Quercus rubra* - Red Oak, shall be installed and maintained:

**450-48.A.10.h.** Section 385-70 of the Township SLDO regarding Street Trees shall be followed.

**450-48.A.10.i.** Within the TND-2 District, Street Trees may be placed within the right-of-way between the curb and sidewalk where space permits.



Street Tree along Sidewalk



Street Tree at the Four Dogs Tavern

## **Site Design Guidelines**

The overall form of the Village of Marshallton derived from three overarching elements:

1. The Streetscape;
2. Site Design; and
3. Building Design.

This Site Design section pertains to lots outside of the right-of-way of existing and proposed streets and roads.

The Site Design Guidelines are intended to promote place-making and the continued sense of place of Marshallton.



Pocket Park

Elements addressed in this Section include:

- 450-48.A.11.** Building Location
- 450-48.A.11.1.** Blocks
- 450-48.A.12.** Build-To Line/Setbacks
- 450-48.A.12.1.** Building Massing on Lots
- 450-48.A.13.** Hedges, Fences and Walls
- 450-48.A.14.** Landscaping
- 450-48.A.15.** Parking: Off-Street
- 450-48.A.16.** Signage
- 450-48.A.17.** Street Furniture
- 450-48.A.18.** Utilities
- 450-48.A.19.** Green Areas: (Village Green; Civic Plazas & Squares; Pocket Parks; and Green Courts)



# 450-48.A.11. Building Location

## Manual of General Design Guidelines

West Bradford Township: TND-2 District



Building anchors corner and abuts the Sidewalk



Building and Porch located close to Sidewalk and Street

### Legislative Intent

**450-48.A.11.a.** Existing buildings in the Village are located close to the streets and sidewalks.

**450-48.A.11.b.** Buildings located close to the street and sidewalk help to anchor corners, and form the Streetscape character of the Village.

### Guidelines and Best Practices

**450-48.A.11.c.** Buildings shall be located close to the sidewalk and street, in alignment with existing buildings at a Build-To Line.

**450-48.A.11.d.** New buildings shall be located in alignment with existing buildings at a Build-To Line.

**450-48.A.11.e.** Porches, porticos, colonnades, stoops, and the like shall be built and maintained, as a transition element from the principal building structure to the public realm of the Streetscape.

**450-48.A.11.f.** Enclosed porches shall not be allowed for the front porch of any structure.



Buildings along Sidewalk define the Streetscape edge



Building with front porch as transitional element



# 450-48.A.11.1. Blocks

## Manual of General Design Guidelines

West Bradford Township: TND-2 District



Existing Block with normative length and depth

### Legislative Intent

**450-48.A.11.1.a.** New development is intended to emulate the existing block characteristics of the Village.

**450-48.A.11.1.b.** New development is intended to emulate the pattern of the existing Village with a range of 4 to 7 buildings per block.

### Guidelines and Best Practices

**450-48.11.1.c.** Blocks shall be created with a maximum length of 560 feet with a maximum of 7 buildings, and a minimum length of 350 feet with a maximum of 5 buildings.

**450-48.11.1. d.** Blocks shall be a minimum 140 feet in depth, and a maximum of 250 feet in depth.



Existing Block with normative length and 4 dwellings

# 450-48.A.12. Build-To Line/Setback

## Manual of General Design Guidelines

West Bradford Township: TND-2 District



Normative Build-To Line



Buildings in alignment

### Legislative Intent

**450-48.A.12.a.** Many of the existing buildings in the Village are located within 15 to 22 feet from the curbline.

**450-48.A.12.b.** Shallow setbacks help to provide the “outdoor room” character of Marshallton.

### Guidelines and Best Practices

**450-48.12.c.** Setbacks of existing Historical buildings shall be maintained.

**450-48.12.d.** The predominant existing building setbacks shall be emulated.

**450-48.12.e.** Buildings shall be located along new streets within 15 to 22 feet from the curbline, except Green Court lots which shall be 50 to 65 feet from the curbline.

**450-48.12.f.** Streetscape features within the Setback such as curbing, grass strip, street trees, sidewalks, street lights, stonewalls, and fencing shall be permitted.



Shallow Front Yard Setback



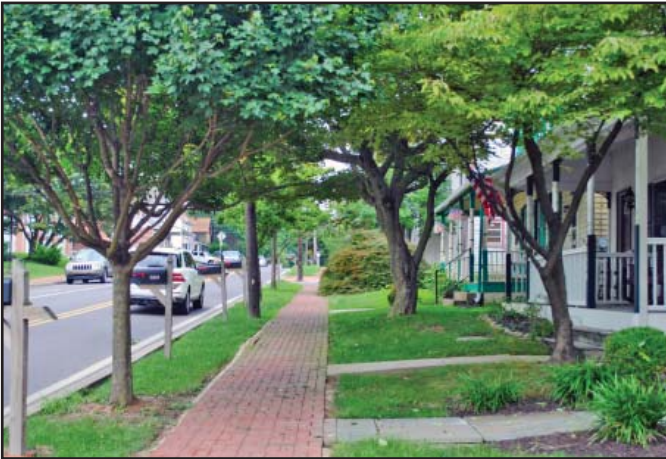
Traditional Build-To Line



# 450-48.A.12.1. Building Massing on Lots

## Manual of General Design Guidelines

West Bradford Township: TND-2 District



Buildings located with proportional setback from curbline



Building proportional setback from curbline

### Legislative Intent

**450-48.A.12.1.a.** Buildings are intended to be sited in proportion to the lot widths and setbacks, without creating an imposing presence.

**450-48.A.12.1.b.** Buildings are intended to have varied side yards in order to emulate the massing of existing buildings in the Village.

### Guidelines and Best Practices

**450-48.A.12.1.c.** New buildings shall reflect the normative locational characteristics of existing buildings relative to scale, proportion, pattern, variety, and setbacks, as specified in other sections of these Design Guidelines.

**450-48.A.12.1.d.** New buildings shall have side yard setbacks in accordance with §450-47.



Buildings with varied side yards



Buildings in scale and proportion with Village setting



# 450-48.A.13. Hedges, Fences and Walls

## Manual of General Design Guidelines

West Bradford Township: TND-2 District



Stone Wall in Front Yard



Fence along Streetscape

### Legislative Intent

**450-48.A.13.a.** Hedges, fences and low walls provide attractive edges to spatial definition along the streetscape.

**450-48.A.13.b.** These features can serve as a type of street wall edge, especially when buildings are not located close to the sidewalk.

### Guidelines and Best Practices

**450-48.A.13.c.** Existing hedges, fences and walls in the Village shall be maintained.

**450-48.A.13.d.** Additional hedges, fences and walls beyond the street right-of-way line, shall be installed and maintained to strengthen the streetscape character, especially whenever buildings cannot be placed at a Build-to line.

**450-48.A.13.e.** Whenever off- street parking areas located adjacent to the streetscape, are provided for 5 or more vehicles, it shall be screened by a pier, fence, hedge/landscaping combination, or wall of at least 36 inches in height.



Parking Screened by pier and landscaping combination



Stone Wall along Sidewalk

# **450-48.A.13. Hedges, Fences and Walls (continued)**

---

## **Manual of General Design Guidelines**

West Bradford Township: TND-2 District

### **Guidelines and Best Practices**

**450-48.A.13.f.** Masonry walls, whether stone or brick, or a combination thereof, shall be designed to reflect patterns and styles of existing walls in the Village.

**450-48.A.13.g.** Walls shall be appropriate to the architectural style of the building on the property.

**450-48.A.13.h.** When visible from a public right-of-way, retaining walls shall be constructed of stone or brick.

**450-48.A.13.i.** Whenever picket fences are installed, they shall be compatible in design to existing picket fences.

**450-48.A.13.j.** Whenever hedges are installed, they shall be Privet, Upright Yews or Upright Holly.



# 450-48.A.14. Landscaping

## Manual of General Design Guidelines

West Bradford Township: TND-2 District



Landscaping complementing Sidewalk and Wall



Landscaping complementing Building and Streetscape

### Legislative Intent

**450-48.A.14.a.** Landscaping adds beauty to the streetscape and softens the appearance of the Village.

**450-48.A.14.b.** Landscaping helps to define and articulate the yard

### Guidelines and Best Practices

**450-48.A.14.c.** Existing attractive landscaping shall be maintained to promote the beauty of Marshallton, and replace any plants that have died or are otherwise degraded.

**450-48.A.14.d.** Plants shall be installed and maintained to further complement buildings, sidewalks, entry courts, parking areas, and pedestrian areas.

**450-48.A.14.e.** A massing and layering of plants shall be provided in order to create a unified appearance, and a variation in plant size and texture.



Massing and Layering of Plants



Landscaping complementing Pocket Park

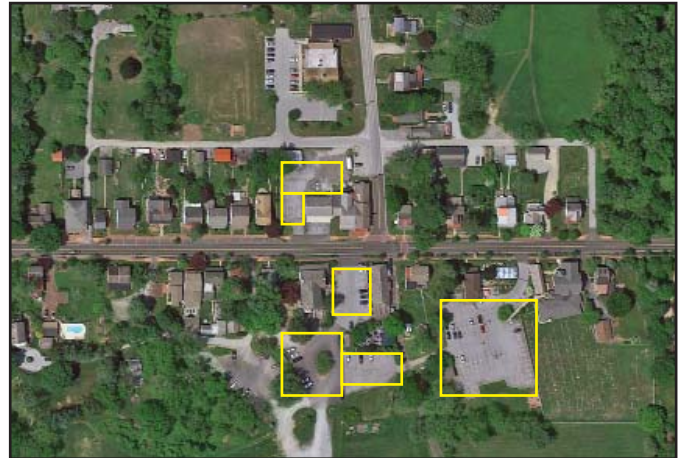
# 450-48.A.15. Parking: Off-Street

## Manual of General Design Guidelines

West Bradford Township: TND-2 District



Off-Street parking located to the side of the building



Off-Street Parking located to the rear and side of buildings

### Legislative Intent

**450-48.A.15.a.** Off-street parking is necessary to accommodate business patrons, shop and store owners, and restaurants.

**450-48.A.15.b.** Off-street parking should be located to the side of or rear of buildings, to promote the traditional character of the Village.

### Guidelines and Best Practices

**450-48.A.15.c.** All new off-street parking shall be located to the side of or rear of buildings.

**450-48.A.15.d.** New off-street parking in front of buildings shall not be created.

**450-48.A.15.e.** Off-street parking areas located adjacent to the streetscape, for 5 or more vehicles, shall be screened by a pier, fence, hedge/landscaping combination, or wall of at least 36 inches in height

**450-48.A.15.f.** Shared parking shall be provided where feasible to promote mixed-use opportunities.

**450-48.A.15.g.** If the lot depth or lot width is not sufficient to provide a detached garage, or if there are topographic, hydrologic, geologic, or woodland constraints, an attached or integral garage connected to the dwelling unit with a minimum 5 foot set back from the front facade of the dwelling, may be provided.



Off-Street Parking with required setback when rear yard parking is not feasible



# 450-48.A.16. Signage

## Manual of General Design Guidelines

West Bradford Township: TND-2 District



Historic Marker Sign



Well designed sign at Marshalton Inn

### Legislative Intent

**450-48.A.16.a.** Well designed signage provides a distinctive appearance and promotes the historic character of the Village.

**450-48.A.16.b.** Signs should be designed to be in scale with buildings and the pedestrian environment.

### Guidelines and Best Practices

**450-48.A.16.c.** Existing signage that is in scale and character with the Village shall be maintained.

**450-48.A.16.d.** Freestanding signs that could create visual clutter shall be minimized. Freestanding signs shall be at least 30 feet apart.

**450-48.A.16.e.** Signs shall be subordinate to the building. Wood and metal are the preferred materials for sign construction.

(continued on page 16.1.)



Business Sign



Civic Sign

# 450-48.A.16. Signage (continued)

---

## Manual of General Design Guidelines

West Bradford Township: TND-2 District

### Guidelines and Best Practices

**450-48.A.16.f.** Signs may be illuminated with soft, indirect light. Back lighting shall not be used.

**450-48.A.16.g.** The shape of the sign shall relate to the architectural style of the building or incorporate elements of such style.

**450-48.A.16.h.** Lettering shall combine easy readability with good visibility.

**450-48.A.16.i.** Colors used in sign design and construction shall relate to and blend with colors on the building as well as with immediately adjacent buildings.

**450-48.A.16.j.** Signs shall not be attached to buildings in ways that interfere with or destroy important architectural details.

**450-48.A.16.k.** Signs that have a quaint, historical flair are preferred.



# 450-48.A.17. Street Furniture

## Manual of General Design Guidelines

West Bradford Township: TND-2 District



Bench at Marshalton Inn Pocket Park



Outdoor Dinning Area

### Legislative Intent

**450-48.A.17.a.** Benches and other street furniture provide attractive pedestrian scaled streetscape elements.

### Guidelines and Best Practices

**450-48.A.17.b.** Existing outdoor benches and seating at business establishments shall be maintained.

**450-48.A.17.c.** Benches shall be installed and maintained wherever feasible such as in Green Areas, along walkways, and in pedestrian gathering areas.

**450-48.A.17.d.** Container plantings shall be installed and maintained to beautify the Village, such as planters, urns, window boxes and the like.

**450-48.A.17.e.** Non-uniform street furniture is desirable.



Benches and Street Furniture in Green Space



Urn with Flowers

# 450-48.A.18. Utilities

## Manual of General Design Guidelines

West Bradford Township: TND-2 District



Existing Utility Poles with overhead electrical wires



Existing Utility Poles along Sidewalk

### Legislative Intent

**450-48.A.18.a.** Overhead utility wires degrade the visual quality of the Village.

### Guidelines and Best Practices

**450-48.A.18.b.** All new utilities shall be installed underground.

**450-48.A.18.c.** Existing overhead wires shall be relocated to alleys where feasible.

**450-48.A.18.d.** HVAC equipment, generators, cable boxes, and other like type infrastructure shall be screened.



Existing Utility Poles and Wires along Strasburg Road



Existing Utility Pole and Wires at Strasburg and Northbrook Roads



# 450-48.A.19 Green Areas: Village Green

## Manual of General Design Guidelines

West Bradford Township: TND-2 District



The Wyndcrest TND Neighborhood (Sandy Springs, MD) has two beautiful Village Greens, one at the Entrance, a one in the Center of Clustered Dwellings

### Legislative Intent

**450-48.A.19.a.** The Village Green is intended to be an attractive Gateway feature of the TND-2 District.

### Guidelines and Best Practices

**450-48.A.19.b.** A Village Green shall be built and maintained whenever a two (2) acre tract is developed.

**450-48.A.19.c.** Whenever a Village Green is proposed, it shall be at least 3,500 square feet in area.



Single-Family Detached and Attached Homes Clustered around the Village Green



# 450-48.A.19. Green Areas: Village Green (continued)

## Manual of General Design Guidelines

West Bradford Township: TND-2 District



Kentlands Village Green, Gaithersburg, MD



Village Green at Lantern Hill, Doylestown, PA

### Legislative Intent

**450-48.A.19.d.** The Village Green is intended to provide a viable space around which buildings can be grouped in a TND.

### Guidelines and Best Practices

**450-48.A.19.e.** Village Greens shall be installed and maintained as level areas, not to exceed 5% slope.

**450-48.A.19.f.** Village Greens shall be embellished with benches, gazebos, pavilions, plantings, gardens, lighting, and the like.



Village Green at Ship Carpenter Square - Lewes, Delaware



# 450-48.A.19. Green Areas: Civic Plazas & Squares

## Manual of General Design Guidelines

West Bradford Township: TND-2 District



Oglethorpe Square, Savannah, GA



Civic Plaza with Pergola at Georgetown Square, Cranberry Township, PA

### Legislative Intent

**450-48.A.19.g.** A Civic Plaza and Square is intended to be a primarily rectilinear or squared open space amenity within a TND.

### Guidelines and Best Practices

**450-48.A.19.h.** Whenever a Civic Plaza and/or Square is proposed, it shall be at least 1,000 square feet in area.

**450-48.A.19.i.** Civic Plazas and Squares shall be installed and maintained as predominantly level areas (less than 5% grade) with substantial landscaping.

**450-48.A.19.j.** Civic Plazas and Squares shall be installed and maintained as combined landscaped and hardscaped spaces, with pavers, benches, lighting, and shade trees.



Oglethorpe Square, Savannah, GA



Civic Plaza with Pergola at Georgetown Square, Cranberry Township, PA



# 450-48.A.19. Green Areas: Civic Plazas & Squares (cont.)

## Manual of General Design Guidelines

West Bradford Township: TND-2 District



Bench and Landscaped Area - Wayne, PA



Sitting Area - State College, PA

### Legislative Intent

**450-48.A.19.k.** Pedestrian gathering places and “pocket parks” are intended to provide viable opportunities to celebrate the public realm of a TND.

### Guidelines and Best Practices

**450-48.A.19.i.** Whenever “Pocket Parks” are proposed, they shall be installed and maintained as plazas, pavilions, gazebos, and sitting areas at least 500 square feet in area.

**450-48.A.19.m.** Benches, sitting walls, shade trees, plantings, lighting, and other landscape and hard-scape features shall be installed and maintained in Pocket Parks to enhance attractiveness and safety.



Sitting Wall - Newport, RI



Benches in Pocket Park - Haverford Township, PA



# 450-48.A.19. Green Areas: Green Court (cont.)

## Manual of General Design Guidelines

West Bradford Township: TND-2 District



Green Court: Marshallton Walk



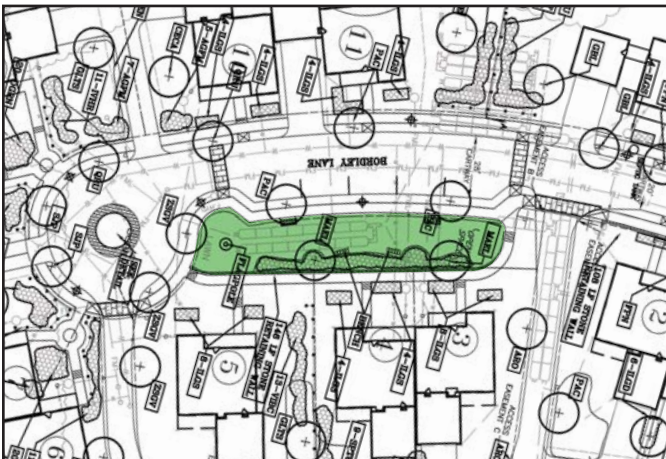
Green Court: Marshallton Walk

### Legislative Intent

**450-48.A.19.n.** A Green Court is intended to be a mid-block Green Area that provides visual interest and a pedestrian gathering area along a streetscape.

### Guidelines and Best Practices

**450-48.A.19.o.** Whenever a Green Court is proposed, it shall be at least 3,500 square feet in area, shall be constructed and maintained with sidewalks, benches, and landscaping.



Green Court: Marshallton Walk



Green Court: Kentlands, MD

## **Building Design Guidelines**

The Building Design Guidelines are intended to provide only a general directive for buildings.

Whenever one (1) or more non-residential buildings are proposed, two (2) or more new residential dwellings are proposed, or where a Subdivision or Land Development Plan is required, a more detailed “Specific Manual of Design Guidelines” shall be prepared and submitted by the Applicant, in accordance with Article VIII of the TND-2 Ordinance. The Specific Manual shall clearly depict and describe the proposed Building Design for the development.

This Manual shall also apply to the redevelopment of lots, as well as development and changes to an existing building or buildings when it involves the requirement for a building permit and changes to an existing building or buildings involving features addressed in this Manual of General Design Guidelines, excluding repairs.



Traditional Marshallton Building

Elements addressed in this Section include:

- 450-48.A.20.** Accessory Buildings and Structures
- 450-48.A.21.** Adaptive Reuse of Buildings
- 450-48.A.22.** Alterations and Additions to Existing Buildings
- 450-48.A.23.** Building Design
- 450-48.A.24.** Building Facades
- 450-48.A.25.** Building Heights
- 450-48.A.26.** Building Materials
- 450-48.A.27.** Building Scale/Size/Proportion
- 450-48.A.28.** Fenestration
- 450-48.A.29.** Front Doors/Entryways
- 450-48.A.30.** Porches and Stoops
- 450-48.A.31.** New Buildings
- 450-48.A.32.** Garage Doors



# 450-48.A.20. Accessory Buildings and Structures

## Manual of General Design Guidelines

West Bradford Township: TND-2 District



Garage in Rear Yard



Garages off Alley

### Legislative Intent

**450-48.A.20.a.** Accessory buildings such as garages and sheds are intended to be compatible with principal buildings.

### Guidelines and Best Practices

**450-48.A.20.b.** Accessory buildings shall be installed and maintained to be compatible with the architectural character of the principal building, in terms of design, scale, proportion, materials, and color.

**450-48.A.20.c.** Prefabricated storage buildings made of wood may be used if they are not placed in the front or side yards (not visible from the public right-of-way).

**450-48.A.20.d.** Newly constructed garages shall provide a cohesive appearance with the property.



Garage off Alley



Accessory Building compatible with principal building architecture

# 450-48.A.20. Accessory Buildings and Structures

## Manual of General Design Guidelines

West Bradford Township: TND-2 District



Mail Kiosk within context-sensitive accessory structure



HVAC equipment screened from view



Satellite Dish Antenna located on the rear of the dwelling

### Legislative Intent

**450-48.A.20.e.** Accessory structures such as cable tv boxes, satellite dish antennae, generators, and other electrical/mechanical equipment are intended to be screened in order to minimize their adverse visual impact from streets and other public ways.

**450-48.A.20.e.** Accessory structures such as mail kiosks are intended to be similar to the overall neighborhood character of the principal buildings.

### Guidelines and Best Practices

**450-48.A.20.f.** Accessory structures such as cable tv boxes, satellite dish antennae, generators, and other electrical/mechanical equipment shall be located on the side or rear of a dwelling, and screened by walls and/or fencing complementary to the material of the principal building and/or structure.

**450-48.A.20.g.** Accessory structures such as HVAC equipment shall be located to the side or rear of the dwelling and screened by fencing or walls complementary to the material of the principal building, or with evergreen plantings if visible from the street frontage.

**450-48.A.20.h.** Accessory structures such as mail kiosks shall be constructed in a similar architectural style to the principal buildings, and shall be centrally located near sidewalks and off-street parking.



# 450-48.A.21. Adaptive Reuse of Buildings

## Manual of General Design Guidelines

West Bradford Township: TND-2 District



Adaptive Reuse of Old Drovers Inn



Adaptive Reuse and Mixed Use

### Legislative Intent

**450-48.A.21.a.** The adaptive reuse of a building preserves its integrity and continues its lifespan.

**450-48.A.21.b.** Adaptive reuse can more easily be accommodated with buildings that contain smaller square footages.

### Guidelines and Best Practices

**450-48.A.21.c.** Buildings in the Village shall continue to be adaptively reused in order to extend their lifespan and utility.

**450-48.A.21.d.** Existing buildings shall be rehabilitated in order to accommodate new uses.

**450-48.A.21.e.** Adaptive reuse shall be promoted at all times as an alternative to demolition.

**450-48.A.21.f.** Existing building features shall be utilized in adaptive reuse.



Adaptive Reuse of former Blacksmith Shop



Adaptive Reuse of former Grange

# 450-48.A.22. Alterations and Additions to Existing Buildings

## Manual of General Design Guidelines

West Bradford Township: TND-2 District



The existing Buildings in the Village

### Legislative Intent

**450-48.A.22.a.** Alterations and additions to existing buildings are intended be undertaken in the most sensitive manner as possible.

**450-48.A.22.b.** Alterations, which may involve reconstruction and restoration, are intended to be seamless relative to blending old and new features.

**450-48.A.22.c.** This section is intended to apply whenever there is a subdivision or land development, involving one (1) or more non-residential buildings or 2 or more residential buildings and to the redevelopment of lots, as well as development and changes to an existing building or buildings when it involves the requirement for a building permit and changes to an existing building or buildings involving features addressed in this Manual of General Design Guidelines, excluding repairs.

### Guidelines and Best Practices

#### **Foundations**

**450-48.A.22.d.** When a foundation must be repaired or rebuilt, original bricks or stones shall be used or be replaced by bricks or stones that are similar to the original in size, color and surface texture.

**450-48.A.22.e.** Openings between brick piers may be filled in with matching masonry materials or lattice. The infill shall be noticeably recessed.

**450-48.A.22.f.** Painting and waterproofing of exposed parts of foundations are discouraged. Painting may be permitted if the exposed areas historically have been painted.

**450-48.A.22.g.** Underpinning shall consist of bricks and joint tooling that match the piers as closely as possible. Non-structural underpinning may consist of a single course of bricks, lattice brick walls, or even treated wooden lattice. Structural underpinning may be a veneer wall of brick covering a concrete block wall. This thickness may meet the minimum requirements for a foundation wall. Brick lattice may also be used as a veneer to cover the concrete block.

**450-48.A.22.h.** Openings for venting of the foundation area shall be non-obtrusive and in non-character defining areas of the building.

**450-48.A.22.i.** An access door of pressure treated material shall be located in a non-obtrusive area of a non-character-defining elevation.

#### **Exterior Wall Materials**

**450-48.A.22.j.** Resurfacing wooden buildings with wood materials unavailable when the structure was built shall not be permitted

**450-48.A.22.k.** Sandblasting wooden siding will compromise the structural integrity of the material and will accelerate decay and shall not be permitted.

(Continued on page 22.1.)



# **450-48.A.22. Alterations and Additions to Existing Buildings**

Manual of General Design Guidelines

West Bradford Township: TND-2 District

## **Guidelines and Best Practices**

**450-48.A.22.i.** Wood siding which cannot be repaired, shall be replaced with duplicate siding. The use of synthetic siding materials, such as asbestos siding, asphalt siding, aluminum siding, plastic siding, artificial cast stone, and brick veneer shall be avoided. However, hardiplank or equivalent may be utilized as a siding material.

**450-48.A.22.m.** Sandblasting and other abrasive surface preparation methods, that can damage materials, shall not be permitted

**450-48.A.22.n.** Materials, such as brick, stone, wood shingles, and certain metals, which have not historically been painted, shall remain unpainted.

**450-48.A.22.o.** Repairs and replacements of deteriorated masonry shall be made with products that duplicate the existing materials as closely as possible in appearance, texture and color.

**450-48.A.22.p.** The use of synthetic materials shall be avoided, such as artificial brick siding, brick veneer, and artificial cast stone.

**450-48.A.22.q.** Sandblasting shall not be permitted as it compromises the structural integrity of the masonry and accelerates deterioration.

## **Chimneys**

**450-48.A.22.r.** Original chimneys are significant features of old buildings and shall be preserved. Chimney repairs may include re-laying loose bricks, careful repointing of deteriorated mortar joints, and proper installation of metal flashing.

**450-48.A.22.s.** The design of original chimney masonry shall be preserved.

**450-48.A.22.t.** Metal caps or other covers are acceptable as long as they are installed without altering the design of the chimney.

**450-48.A.22.u.** Brick corbelling, clay chimney pots, or other original features shall be repaired rather than removed.

**450-48.A.22.v.** Chimneys and furnace stacks added after original construction may be removed if the appearance of the building will otherwise remain unchanged.

**450-48.A.22.w.** Original chimneys shall not be shortened or removed when they become deteriorated.

**450-48.A.22.x.** Parging shall not be used as alternative to repointing deteriorated chimney masonry.

**450-48.A.22.y.** Metal vent pipes that protrude through the top of a chimney shall not be permitted. Chimneys made of materials that simulate brick or stone shall not be permitted. Unpainted masonry shall not be painted.

## **Windows and Doors**

Windows and doors are important architectural elements. Often, the entire character of a structure is destroyed by the alteration of these elements.

**450-48.A.22.z.** All existing window openings shall be retained.

**450-48.A.22.aa.** Relevant elements pertaining to windows such as sashes, glass, lintels, sills, architraves, shutters, and hardware shall be retained.

**450-48.A.22.bb.** Windows shall be repaired whenever feasible. If replacement is necessary, the new units should match the existing as closely as possible.

**450-48.A.22.cc.** Shutters shall be retained.

**450-48.A.22.dd.** The pattern, arrangements, and dimensions of doors and windows on the principal elevations of a building shall be retained.

**450-48.A.22.ee.** Metal storm windows and doors with painted or baked enamel finishes shall be permitted.

**450-48.A.22.ff.** Double-glazed windows shall be permitted if they match as closely as possible the material, scale, character, and appearance of the original window.

**450-48.A.22.gg.** Introduction of new window and door openings into the principal elevations of a building shall be minimized. If permitted, new openings shall be proportionally the same as existing openings and shall have matching sash, glass, sills, frames, casings, and muntin patterns.

(Continued on page 22.2.)

# 450-48.A.22. Alterations and Additions to Existing Buildings

## Manual of General Design Guidelines

West Bradford Township: TND-2 District

### Guidelines and Best Practices

**450-48.A.22.hh.** Original window and door casings, sills, and trim shall not be destroyed when storm windows or doors are installed.

**450-48.A.22.ii.** Sash, window panes, muntins, and rails shall not be replaced with those that are incompatible in size, configuration, and reflective qualities or which alter the setback relationship between window and wall.

**450-48.A.22.jj.** Unpainted aluminum shall not be permitted for storm doors and windows. They shall have a baked enamel finish matching the building's window trim or galvanized metal to be painted to match window trim color.

**450-48.A.22.kk** The use of existing doors and door hardware is recommended. If replacement is necessary, the new door shall match the old as closely as possible and be appropriate to the architectural style of the building.

**450-48.A.22.ll.** Door hardware shall be repaired rather than replaced. If replacement is necessary, the new hardware shall match the old as closely as possible and be appropriate to the architectural style of the building.

**450-48.A.22.mm.** Storm doors shall be full view glass doors and constructed of wood. If metal doors must be used, they should be full view and have a baked enamel finish to match the trim color.

### **Architectural Components and Details**

**450-48.A.22.nn.** Architectural components, such as fascias, soffits, trim, columns, brackets, porch railings, and door/window casings, and architectural details, such as joinery and surface patterns, contribute significantly to the historic character of a building and shall be protected.

**450-48.A.22.oo.** Original architectural components and details shall be retained whenever possible.

**450-48.A.22.pp.** When architectural components and details must be repaired and replaced, the new components or details shall match the historic elements as closely as possible.

**450-48.A.22.qq.** Architectural components and details that are not appropriate to the historic character of the building shall not be added.

**450-48.A.22.rr.** Sandblasting and other abrasive treatments that can damage historic architectural components and details shall not be permitted.

**450-48.A.22.ss.** Architectural components such as fascias, soffits, and columns, shall not be replaced or covered by materials, such as plywood, vinyl, and aluminum, that would not have been used in the original construction.

### **Roofs and Roofing Materials**

**450-48.A.22.tt.** Original roof forms, pitches, rafter tails, molding, trim, and soffit boards shall be retained.

**450-48.A.22.uu.** Historic roofing materials, shall be preserved, if feasible.

**450-48.A.22.vv.** Features such as dormers or balustrades may be added if they are appropriate for the style and scale of the building.

**450-48.A.22.ww.** Composition shingles of asphalt and fiberglass are acceptable substitutes for most original roofing materials.

**450-48.A.22.xx.** White or very light shingles are shall not be permitted.

**450-48.A.22.yy.** Metal flashing shall be installed behind siding or roofing.

**450-48.A.22.zz.** Roof ventilators, skylights, solar panels, and other mechanical items shall be installed on rear slopes or other locations not visible from the front yard.

**450-48.A.22.aaa.** Built-in gutters that are important to the architecture of the structure shall be repaired rather than removed when they become deteriorated.

**450-48.A.22.bbb.** Raising or lowering the roof pitch, adding sheds, or removing original features such as dormers, turrets, chimneys, and balustrades shall not be permitted.

**450-48.A.22.ccc.** Roofing tar shall not be permitted as a substitute for properly installed metal flashing.



# **450-48.A.22. Alterations and Additions to Existing Buildings**

## **Manual of General Design Guidelines**

West Bradford Township: TND-2 District

### **Guidelines and Best Practices**

#### **Building Systems**

**450-48.A.22.ddd.** Installation, rehabilitation, or replacement of mechanical systems shall be planned to minimize changes to the appearance of a building. Building systems include mechanical and electrical equipment and distributions lines; plumbing pipes and vents; and communication systems, such as telephone, television, and satellite.

**450-48.A.22.eee.** Mechanical services shall be installed in areas and spaces that will require the least possible alteration to the plan, materials, and appearance of a building. If feasible, existing early mechanical systems, including plumbing and early lighting fixtures, shall be repaired.

**450-48.A.22.fff.** Utility meters and heating and air-conditioning equipment shall be located at the rear of a structure if feasible. Mechanical equipment which can be seen from the public right-of-way shall be screened with shrubbery or appropriate fencing.

**450-48.A.22.ggg.** Utility meters and panels that are visible from the public right-of-way shall be configured and located as close to grade as utility company standards permit.

**450-48.A.22.hhh.** Mechanical supply lines and ductwork shall be located inside buildings if feasible. Exterior mechanical supply lines and ductwork shall be disguised by architectural elements compatible with the character of the building and shall be located as inconspicuously as possible.

**450-48.A.22.iii.** Exposed ductwork or piping that is visible from the front yard shall not be permitted.

**450-48.A.22.jjj.** Plumbing vents shall not be visible from the front yard.

**450-48.A.22.kkk.** Solar collectors shall not be visible from the front yard.

**450-48.A.22.lll.** Mechanical equipment shall not be located in front of the midpoint of the side of the building.

**450-48.A.22.mmm.** Attaching exterior electrical, telephone, television, etc. cables to the principal elevations of the building shall not be permitted.

#### **Safety and Code Elements**

**450-48.A.22.nnn.** Fire escapes and access ramps shall be designed so there is minimal visual impact on the building. If feasible, they shall not be visible from the public right-of-way.

**450-48.A.22.ooo.** Fire escapes and access ramps that are visible from the public right-of-way shall be constructed so that the scale, materials, and details are compatible with the building.

**450-48.A.22.ppp.** Fire escapes and access ramps which are visible from the public right-of-way shall be painted to match or complement the building.

**450-48.A.22.qqq.** Fire escapes and access ramps shall be constructed so that they can be built or removed with minimum damage to the building. If feasible, new doors for fire escapes shall be located in existing openings.

#### **Additions**

**450-48.A.22.rrr.** An addition shall be located to the rear or in an inconspicuous location at the side of the building.

**450-48.A.22.sss.** An addition shall be designed and constructed so that the character-defining features of the building are not radically changed, obscured, damaged or destroyed.

**450-48.A.22.ttt.** An addition shall be limited in size and scale in relationship with the existing building.

**450-48.A.22.uuu.** An addition shall be clearly defined by roof line, cornice height, wall plane, and materials.

**450-48.A.22.vvv.** A contemporary design that is compatible with the building shall be acceptable for a new addition.

**450-48.A.22.www.** Major landscape features, such as large trees and plantings, shall be retained and protected when an addition is constructed.

(Continued on page 22.4.)

# **450-48.A.22. Alterations and Additions to Existing Buildings**

## **Manual of General Design Guidelines**

West Bradford Township: TND-2 District

### **Guidelines and Best Practices**

**450-48.A.22.xxx.** Alterations that change the character and scale of the existing building to accommodate an addition shall not be acceptable.

**450-48.A.22.yyy.** Removal of, or alterations to, important architectural details on the original building to accommodate an addition shall not be acceptable.

**450-48.A.22.zzz.** Additions, such as greenhouses, solariums, and balconies, shall not be placed on the primary elevation/primary facade of the building.

**450-48.A.22.aaaa.** All other relevant Sections of this Manual shall apply, and Section 450-48.A-6. Get Your House Right shall apply.



# 450-48.A.23. Building Design

## Manual of General Design Guidelines

West Bradford Township: TND-2 District



Traditional Building with traditional fenestration and materials

### Legislative Intent

**450-48.A.23.a.** Many of the buildings in the Village are architecturally diverse, ornate and built with materials that existed prior to 1950.

**450-48.A.23.b.** The character of the Village is derived in large part due to the smaller scale buildings, the size of buildings, and the proportion of the building mass to front and side yard setbacks.



Traditional Building with traditional fenestration and materials

### Guidelines and Best Practices

**450-48.A.23.c.** Buildings shall be designed to take maximum advantage of potential adaptive reuse from residential to commercial, to office, back to residential. In so doing, design, build and maintain buildings with a similar size, scale and proportion to better enable multiple adaptations over time.

**450-48.A.23.e.** Buildings shall be designed to emulate the characteristics of existing buildings such as, the facades, heights, materials, scale/size, fenestration, porches, stoops, and rooflines.



Traditional Building with varied roof lines



Infill Building with traditional fenestration



# 450-48.A.24. Building Facades

## Manual of General Design Guidelines

West Bradford Township: TND-2 District



Building Facade Articulation



Infill Building emulating characteristics of Traditional buildings in the Village

### Legislative Intent

**450-48.A.24.a.** Most of the building facades in the Village have vertical bays and proportions.

**450-48.A.24.b.** Most of the building facades have a layering effect created by elements such as shutters, pilasters, porticoes, porches and pent eaves.

**450-48.A.24.c.** Facades of existing buildings utilize similar materials.

### Guidelines and Best Practices

**450-48.A.24.d.** Articulate Facades of buildings shall be articulated through the use of such elements as pilasters, porticoes, porches, stoops and shutters. The creation of facades that are flat and without ornamentation is discouraged.

**450-48.A.24.e.** Porches and stoops are encouraged.

**450-48.A.24.f.** Facades shall be articulated with vertical bays and proportions.

**450-48.A.24.g.** The traditional facades of the village shall be emulated to maintain a consistency of form, texture, scale, and proportion.



Articulated building facade



Building with front porch articulation



# 450-48.A.25. Building Heights

## Manual of General Design Guidelines

West Bradford Township: TND-2 District



Three Story Building



Three Story Building

### Legislative Intent

**450-48.A.25.a.** Most buildings in the Village are two and three stories in height.

**450-48.A.25.b.** Two and three story buildings give stature and structure to the Streetscape.

**450-48.A.25.c.** Two and three story buildings provide opportunities for the vertical mix of uses of a building.

### Guidelines and Best Practices

**450-48.A.25.d.** Two and three story buildings shall be constructed and maintained in the Village.

**450-48.A.25.e.** If a one-story building is built for a portion of the structure, the building height of that section of the buildings, shall be at least 20 feet, and the roof pitch shall be at least 7/12.

**450-48.A.25.f.** Rooflines shall vary by three feet to six (3 to 6) feet in height for any two adjoining buildings.



Two Story Buildings, with Third/Half Story in Gable End



Two Story Infill Building

# 450-48.A.26. Building Materials

## Manual of General Design Guidelines

West Bradford Township: TND-2 District



Brick and Stone used as exterior building materials



Martins Tavern traditional building materials

### Legislative Intent

**450-48.A.26.a.** Brick, stone, cut stone, stucco over stone, and clapboard siding are traditional building materials in the Village.

**450-48.A.26.b.** The use of traditional materials provides a historic reference to the Village.

**450-48.A.26.c.** Synthetic materials such as vinyl siding and cultured stone are considered to be non-traditional.

### Guidelines and Best Practices

**450-48.A.26.d.** Brick, stone, cut stone, stucco over stone, clapboard siding, and hardiplant or equivalent shall be used in all new construction.

**450-48.A.26.e.** Contrast shall be provided with the primary building material, through the use of windows, doors, pilasters, columns, porticos, pent eaves, porches, stoops, and the like.

**450-48.A.26.f.** The same building materials shall be incorporated on all sides of a building.

(continued on page 26.1)



Stone building with complementary stone walls and stone piers



Buildings with stone materials



# 450-48.A.26. Building Materials (continued)

---

## Manual of General Design Guidelines

West Bradford Township: TND-2 District

### Guidelines and Best Practices

#### **Masonry**

**450-48.A.26.g.** Original or early masonry materials shall be retained to the maximum extent possible.

**450-48.A.26.h.** Repairs and replacements of deteriorated masonry shall be performed with products that duplicate the existing materials as closely as possible in appearance, texture, and color.

**450-48.A.26.i.** New masonry materials which were not available when the structure was constructed, such as artificial brick siding, artificial cast stone, cultured stone, brick veneer, Portland cement, and fiberglass mixtures, shall not be permitted.

**450-48.A.26.j.** Existing bond patterns and mortar joints shall be duplicated.

**450-48.A.26.k.** Repointing shall match the design and color of original mortar joints as closely as possible.

**450-48.A.26.l.** Use of a high Portland cement content is highly discouraged because this will often result in mortar joints stronger than the existing masonry. This is a source of potential deterioration due to the new mortar bonding too strongly to the masonry.

**450-48.A.26.m.** Sandblasting shall not be permitted. It compromises the structural integrity of the brick, accelerating the deterioration process.

**450-48.A.26.n.** Cleaning masonry is recommended only when it is determined that the "dirt" is actually accumulated and not the effects of weathering.

**450-48.A.26.o.** Masonry shall be cleaned with the gentlest means possible, such as low pressure water and natural soft brushes.

**450-48.A.26.p.** Chemical cleaners shall be used only after a spot test has been conducted by the Architect on the DRC, and only after the Architect has determined that no adverse effects will occur to the masonry.

**450-48.A.26.q.** All masonry architectural features shall be retained. Cornices, moldings, etc. are significant parts of structures and shall be retained as such.

**450-48.A.26.r.** Masonry shall not be painted unless it has historically been painted.

**450-48.A.26.s.** Masonry shall not be parged (covered with cement-like coating) unless it has been historically parged.

#### **Wood**

**450-48.A.26.t.** Existing wood siding shall be retained when feasible.

**450-48.A.26.u.** Repairs and replacements to wood shall match, as closely as possible, the existing wood in size, shape, texture and composition.

**450-48.A.26.v.** The following materials are not recommended to replace wood: asbestos siding, asphalt siding, aluminum siding, vinyl siding, plastic siding, artificial stone, or brick veneer.

**450-48.A.26.w.** Wooden architectural features shall be retained whenever possible.

**450-48.A.26.x.** Paint and other coating, such as stucco, shall not be applied to wood that has not historically been painted or coated.

# 450-48.A.27. Building Scale/Size/Proportion

## Manual of General Design Guidelines

West Bradford Township: TND-2 District



Building with traditional scale



Three Bay Building

### Legislative Intent

**450-48.A.27.a.** The buildings in the Village maintain a traditional scale and size typically at two and three stories in height, and three to five bays in width.

**450-48.A.27.b.** The traditional scale and size is also formed through a fenestration pattern that is typically vertical.

### Guidelines and Best Practices

**450-48.A.27.c.** Buildings of predominantly three to five bays in width shall be constructed and maintained.

**450-48.A.27.d.** Buildings shall not exceed 60 feet in width along the primary facades.

**450-48.A.27.e.** Buildings shall have recesses and/or projections of up to five (5) feet at regular intervals. However, no continuous plane of a facade shall exceed 30 feet without a recess or projection.



Normative building scale



Smaller scale building



# 450-48.A.28. Fenestration

## Manual of General Design Guidelines

West Bradford Township: TND-2 District



Vertical articulation of doors and windows



Verticality of building emphasized with Fenestration

### Legislative Intent

**450-48.A.28.a.** All of the buildings in the Village are detailed with vertical window treatments.

**450-48.A.28.b.** Windows, doors, shutters, and dormers appear balanced in the Village with consistency of vertical proportions.

### Guidelines and Best Practices

**450-48.A.28.c.** The primary vertical orientation of windows shall be maintained for primary facades.

**450-48.A.28.d.** Primary facades shall have at least 25% of the building walls pierced with windows and doors.



Vertical articulation of doors and windows



Horizontal building with vertical window and door articulation

# 450-48.A.29. Front Doors/Entryways

## Manual of General Design Guidelines

West Bradford Township: TND-2 District



A portico provides weather protection, while also emphasizing the entrance of the building

### Legislative Intent

**450-48.A.29.a.** The front doors in the Village provide a graceful entryway treatment and appearance.

**450-48.A.29.b.** Front doors that are enhanced with porticos, pent eaves, landscape treatment, and other ornamentation provide a welcoming statement.



Landscaping accentuates entryway

### Guidelines and Best Practices

**450-48.A.29.c.** Enhance the Front doors of the primary facades of buildings shall be enhanced with pent eaves, porticos, porches, stoops and the like.

**450-48.A.29.d.** Columns shall be sized in proportion to the entryway structure.



Front Entry with Porch and Columns Proportionate to Entry



Architectural Elements define entryway



# 450-48.A.30. Porches and Stoops

## Manual of General Design Guidelines

West Bradford Township: TND-2 District



Full Front Porch



Elevated front Porch

### Legislative Intent

**450-48.A.30.a.** The Front Porch and the Stoop are important traditional architectural features in the Village.

**450-48.A.30.b.** The Front Porch and Stoop provide a graceful transition from the height of the building to the front yard and streetscape.

**450-48.A.30.c.** Porch details such as balustrades, columns, and steps are important in defining the front elevation of a building.

### Guidelines and Best Practices

**450-48.A.30.d.** Existing porches and stoops shall be maintained.

**450-48.A.30.e.** Existing and new porches and stoops shall not be enclosed.

**450-48.A.30.f.** Porch and stoop materials shall not be made of pressure treated lumber. Where used these shall be painted.

**450-48.A.30.g.** Porch and stoop columns shall be sized in proportion to porch roofs.

**450-48.A.30.h.** New porches shall be sized to be at least 7 feet deep and 14 feet wide.



Front Porch with Lattice Skirt



Traditional Front Porch

# 450-48.A.30. Porches and Stoops (continued)

---

---

## Manual of General Design Guidelines

### Guidelines and Best Practices

**450-48.A.30.i.** Porches and steps on primary facades shall be repaired rather than removed. Such elements shall be repaired with new materials that match the design and dimensions of the original materials as closely as possible.

**450-48.A.30.j.** Porch restorations that involve the replacement of missing details such as balustrades, steps, or brackets shall be based on historic documentation.

**450-48.A.30.k.** Repairs to porches using materials incompatible with the original materials, such as metal supports, plywood or concrete shall not be made.



# 450-48.A.31. New Buildings

## Manual of General Design Guidelines

West Bradford Township: TND-2 District



Martin's Tavern

### Legislative Intent

**450-48.A.31.a.** New buildings are intended to respect the character of historic buildings.

**450-48.A.31.b.** Contemporary architectural expression is encouraged as long as the design is harmonious with the historic aspects of the surrounding neighborhood and the Village.



New Infill Buildings

### Guidelines and Best Practices

**450-48.A.31.c.** New buildings shall be located in accordance with the Building Location section.

**450-48.A.31.d.** The primary facade of a new building shall face the street.

**450-48.A.31.e.** Buildings shall not be sited with side walls facing the street, unless they are located on a corner lot.

**450-48.A.31.f.** New construction projects shall respect the existing topography and vegetation on the site.

**450-48.A.31.g.** Medium and large scale grading or fill to level a sloping site shall not be permitted.

**450-48.A.31.h.** Existing trees and historic landscape features, such as retaining walls and gardens, shall be incorporated into the landscape plan for new construction projects.

**450-48.A.31.i.** Large trees that must be removed shall be replaced with trees that grow to be similar in size.

**450-48.A.31.j.** During construction, trees that can be saved shall be protected by using the following practices:

1. Protective fencing shall be installed around tree protection areas prior to any land disturbance.
2. The protected area shall include all land within the tree canopy area. This will insure protection of the root area of the tree.
3. Construction site activities such as parking, material storage, dirt stockpiling, and concrete "wash-out" shall take place outside tree protection areas.

**450-48.A.31.k.** New construction shall incorporate architectural components that can be used to create scale, such as porches, trimwork, and details.

**450-48.A.31.l.** Oversized or monumental architecture shall be avoided in new construction.

(Continued on page 31.1)

# 450-48.A.31. New Buildings (continued)

---

## Manual of General Design Guidelines

West Bradford Township: TND-2 District

### Guidelines and Best Practices

**450-48.A.31.m.** The height of a new building shall relate to the prevailing height along a street. The height shall be within fifteen (15) percent of the average height of the buildings on the block hosting the new construction.

**450-48.A.31.n.** The general plan and form of a new building shall relate to the form of nearby buildings along the street.

**450-48.A.31.o.** The roof of a new building shall relate to the roofs of neighboring buildings in type, pitch and materials.

**450-48.A.31.p.** New residential buildings shall have porches, porticos, or stoops.

**450-48.A.31.q.** Flat roofs without cornices and pitched roofs without overhangs shall not be constructed.

**450-48.A.31.r.** The pattern and arrangement of windows and doors of a new building shall relate to nearby buildings.

**450-48.A.31.s.** The ratio of wall space to adjoining openings in a new building shall be similar to that in nearby buildings.

**450-48.A.31.t.** The height and width of openings shall be similar in proportion to those of nearby buildings. Windows shall have a vertical orientation.

**450-48.A.31.u.** New windows and doors shall be similar in type, design, and materials to those in nearby buildings.

**450-48.A.31.v.** Openings in new buildings shall be similar to those of existing buildings. Frames in masonry buildings should be recessed in openings. Frames in wood buildings shall have raised casings with dimensions similar to those found in existing buildings.

**450-48.A.31.w.** Vinyl cladding and unfinished aluminum shall not be permitted as finish materials for windows in a new building.

**450-48.A.31.x.** Snap in muntins in windows in a new building shall be minimized.

**450-48.A.31.y.** Materials, such as rough-sawn (clapboards or panels) and vinyl or aluminum siding, that are substantially different in character and appearance from historic materials, shall not be used in new construction.

**450-48.A.31.z.** Cultured Stone shall not be used in new construction.

**450-48.A.31.aa.** All other relevant Sections of this Manual shall apply to New Buildings, and Section 450-48.A-6. Get Your House Right shall apply.



# 450-48.A.32. Garage Doors

## Manual of General Design Guidelines

West Bradford Township: TND-2 District



Detached Garage with complementary building materials



Garage with wooden doors

### Legislative Intent

**450-48.A.32.a.** Garages are intended to be designed in a manner that is complementary to the Architecture of the dwelling

**450-48.A.32.b.** Attached and Detached Garages are intended to retain the Streetscape.

**450-48.A.32.c.** Garage Doors are intended to be de-emphasized.

### Guidelines and Best Practices

**450-48.A.32.d.** The materials for the Garage shall be complementary to the dwelling.

**450-48.A.32.e.** Whenever a garage is not accessed off an alley, it shall be rotated so that the garage doors do not face the Streetscape, or shall be set back at least 20 feet from the front facade of the dwelling.

**450-48.A.32.f.** Garage doors shall be installed and maintained in a non-white color unless the principal building is white in color.



Garage with complementary building materials



Garage setback from front facade of the dwelling

# Appendix of Specialized Subjects

---

## Manual of General Design Guidelines

West Bradford Township: TND-2 District

This Appendix addresses specialized subjects in the Village of Marshallton.



Village of Marshallton

Elements addressed in this Section include:

**450-48.A-2** Context Sensitive Uses

**450-48.A-3** Demolition

**450-48.A-4** Rehabilitation of Buildings:  
The Secretary of the Interior's  
Standards for Rehabilitation

**450-48.A-5** Definitions

**450-48.A-6** Excerpts of "Get Your House Right",  
by Marianne Cusato & Ben Pentreath,  
2007



# 450-48.A-2. Context Sensitive Uses

## Manual of General Design Guidelines

West Bradford Township: TND-2 District



Old Blacksmith Shop



Restaurant

### Legislative Intent

**450-48.A-2.a.** The Village has an assemblage of diverse uses that promote an attractive and historical place.

**450-48.A-2.b.** The uses are housed in buildings that are smaller in scale and predominantly residential in proportion.

### Guidelines and Best Practices

**450-48.A-2.c.** Context sensitive uses shall be promoted, such as:

1. Antique Shops
2. Art Galleries
3. Bed and Breakfast Inns
4. Farmers Market/Growers Market
5. Florist
6. Gift shop
7. Humphrey Marshal House
8. Martins Tavern "parklet"
9. Museum
10. Professional Offices
11. Restaurant/Tavern/Brewery

**450-48.A-2.d.** These context sensitive uses shall be located, designed, parked, landscaped, etc. in accordance with this Manual.



Gift Shop on Ground Floor



Martins Tavern "parklet"

# 450-48.A-3. Demolition

---

## Manual of General Design Guidelines

West Bradford Township: TND-2 District

### Legislative Intent

**450-48.A-3.a.** Demolition of a building is an action that can have far-reaching consequences for the Village of Marshallton.

**450-48.A-3.b.** A demolished historic building can no longer communicate the importance of historical events, the life and work of historical figures, or the construction techniques of the past. It is a lost educational resource.

**450-48.A-3.c.** Demolition of a building can have serious, negative psychological and social effects on village residents. Familiar landmarks are very meaningful. Their loss is disturbing, upsets the established sense of community, and decreases livability.

**450-48.A-3.d.** Empty lots create a great physical loss for the streetscape. The “missing tooth” appearance is particularly troubling, as the village derives its character from the consistent appearance of buildings spaced in a traditional arrangement along the street.

### Guidelines and Best Practices

**450-48.A-3.e.** Alternatives to Demolition shall be sought.  
(See “Adaptive Reuse of Buildings”)

**450-48.A-3.f.** Demolition shall be the act of last resort if public safety and welfare requires the removal of a building; or structural instability of a building has been demonstrated by a certified engineer or architect.

**450-48.A-3.g.** Any demolition shall be conducted in accordance with the applicable West Bradford Township Zoning and Building Code requirements.



# 450-48.A-4. Rehabilitation of Buildings

---

## Manual of General Design Guidelines

West Bradford Township: TND-2 District

### The Secretary of the Interior's Standards for Rehabilitation

West Bradford Township shall use these standards as a guide to future development/rehabilitation in the village:

**450-48.A-4.a.** The Secretary of the Interior's Standards for Rehabilitation are 10 basic principles created to help preserve the distinctive character of a historic building and its site, while allowing for reasonable change to meet new needs.

**450-48.A-4.b.** The Standards (36 CFR Part 67) shall apply to historic buildings of all periods, styles, types, materials and sizes. They shall apply to both the exterior and the interior of buildings. The Standards shall also apply to related landscape features and the building site and environment as well as attached, adjacent or related new construction.

**450-48.A-4.c.** The 10 Standards for Rehabilitation are:

1. A property shall be used for its historic purpose or be placed in a new use that requires minimal change to the defining characteristics of the building and its site and environment.
2. The historic character of a property shall be retained and preserved. The removal of historic materials or alteration of features and spaces that characterize a property shall be avoided.
3. Each property shall be recognized as a physical record of its time, place, and use. Changes that create a false sense of historical development, such as adding conjectural features or architectural elements from other buildings, shall not be undertaken.
4. Most properties change over time; those changes that have acquired historic significance in their own right shall be retained and preserved.
5. Distinctive features, finishes, and construction techniques or examples of craftsmanship that characterize a historic property shall be preserved.
6. Deteriorated historic features shall be repaired rather than replaced. Where the severity of deterioration requires replacement of a distinctive feature, the new feature shall match the old in design, color, texture, and other visual qualities and, where possible, materials. Replacement of features shall be substantiated by documentary, physical, or pictorial evidence.
7. Chemical or physical treatments, such as sandblasting, that cause damage to historic materials shall not be used. The surface cleaning of structures, if appropriate, shall be undertaken using the gentlest means possible.
8. Significant archeological resources affected by a project shall be protected and preserved. If such resources must be disturbed, mitigation measures shall be undertaken.
9. New additions, exterior alterations, or related new construction shall not destroy historic materials that characterize the property. The new work shall be differentiated from the old and shall be compatible with the massing, size, scale, and architectural features to protect the historic integrity of the property and its environment.
10. New additions and adjacent or related new construction shall be undertaken in such a manner that if removed in the future, the essential form and integrity of the historic property and its environment would be unimpaired.

# 450-48.A-5. Definitions

---

## Manual of General Design Guidelines

West Bradford Township: TND-2 District

**Alley** - A minor right-of-way, municipally or privately owned, typically providing vehicular access to the side or rear of two or more lots.

**Architrave** - Molded frame surrounding a door or window.

**Awning** - A rooflike shelter made of canvas or other durable material, that provides protection from sun, rain, snow, etc., such as a shelter extending: over a doorway; over a porch; over a deck; or from the top of a window.

**Balustrade** - A short post or pillar supporting a railing.

**Bollard** - A post preventing vehicles from entering an area.

**Corbelling** - A series of projecting blocks supporting a beam or arch.

**Colonnade** - A row of columns.

**Dormer** - A window placed vertically in a sloping roof having a roof of its own

**Eave** - The under part of a sloping roof overhanging a wall.

**Fascia** - A plain horizontal band usually in an architrave

**Fenestration** - The arrangement of windows/doors in a building.

**Green Area** - The landscaped space between principal buildings or an open space or recreational area, pocket park, walkway, promenade, civic plaza or square of other outdoor space in which features such as benches, gazebos, pergolas, trellises, planters, plantings, lighting and the like are installed and maintained.

**Lintel** - A horizontal beam or stone bridging an opening.

**Massing** - The way volumes are put together, and the relationship of different volumes.

**Mixed-Use** - A combination of residential, limited commercial, civic and/or public uses with a TND-2 District.

**Mullin** - A vertical upright dividing a window into two (2) or more panes.

**Muntin** - The vertical part in the framing of a door or panel that butts into the horizontal rails.

**Pattern** - The composite spatial arraignment of buildings along a streetscape that emulates the existing Village character.

**Pent Eave** - A confined, continuation of a sloping roofline past an exterior wall.

**Pilaster** - A shallow pier/column projecting slightly from a wall.

**Portico** - A roofed spaced forming the entrance to a structure.

**Primary Elevation/Primary Facade** - The Elevation and Facade of a building facing the Front Yard. On a corner lot there shall be two Front Yards.

**Proportion** - The arrangement of parts that relates all elements of the design to one another.

**Public Way** - A street or alley, public or private.

**Scale** - The relationship between the sizes of different elements.

**Soffit** - The underside of an architectural element.



# 450-48.A-5. Definitions (continued)

---

## Manual of General Design Guidelines

West Bradford Township: TND-2 District

**Solid to Void Ratio**- The relationship between the voids (i.e., the window and door openings; Green or open area; etc. ) to the solid (i.e., proportion of a building facade that comprises a blank or solid wall; building mass; etc).

**Stoop** - A small porch, platform, or staircase leading to the entrance to a building.

**Streetscape** - The public space of the village within which buildings and structures are placed close to the street and with features such as facades, porches, shopfronts, street trees, streetlights, sidewalks, picket fences, and awnings that contribute to a cohesive character.

**Underpinning** - Masonry foundation used to support a wall, porch, or deck from below.

**Vertical Bay** - A vertical division of the exterior of a building marked by a particular fenestration.

**Village** - The Village of Marshallton, West Bradford Township, PA.

**Volume** - The amount of 3-dimensional space that a building or object occupies.