

brief property description; an outline of the proposed project; and an extensive discussion of the public benefit.

- Development Grants reimburse park facility and trail construction up to a maximum of 50% of a project's cost to a maximum of \$250,000 if outlined criteria are met (see Project Finances in Section II-before completing application). Maximum cumulative County construction funds for any one facility over the life of the facility are \$250,000, for parks less than 20 acres. Projects to develop parks that do not preserve land may not be funded.

*Is a match required?*

Generally 50%.

*How to apply*

Visit this page for guidance: <http://www.chesco.org/index.aspx?NID=1505>

*When is the application period?*

The most recent application deadline was February 28, 2014.

## CHESTER COUNTY AGRICULTURAL PRESERVATION PROGRAM

<http://www.chesco.org/index.aspx?NID=1368>

*Who is eligible to apply?*

Landowners.

*What types of projects are funded?*

Easements on high-quality farmland located in an Agricultural Security Area consisting of 500 or more acres; be at least 50 acres in size, or 10 acres in size and adjacent to a preserved property; have at least 50% of the soils that are available for agricultural production and are of capability classes I-IV; contain the greater of 50% or 10 acres of harvested cropland, pasture, or grazing land.

*Is there a maximum amount?*

The funding limit is \$12,000 per acre.

*Is a match required?*

There is a local match minimum of 50%.

*How to apply*

Information on applying to sell an agricultural conservation easement can be obtained by contacting the office via phone, email, regular mail, or by visiting.

*When is the application period?*

Applications must be received by August 1<sup>st</sup> of each year. Check the website for updates.

## CHESTER COUNTY VISION PARTNERSHIP PROGRAM

<http://pa-chestercounty.civicplus.com/DocumentCenter/View/15085>

The Vision Partnership Program is a planning grant available to local municipalities and multi-municipal regions seeking to improve their planning programs and achieve consistency with the goals, objectives, and policies of Landscapes2.

### *Who is eligible to apply?*

The VPP grant is open to all Chester County municipalities. Eligible applicants include a single municipality, a group of two (2) or more contiguous municipalities, or a group of two (2) or more municipalities when located in the same school district. The application shall be submitted by a municipality or a designated lead municipality in the case of a multi-municipal application.

### *What types of projects are funded?*

- Revisions to municipal plans, ordinances, and planning studies to achieve consistency with the principles of Landscapes2 and the County's Strategic Plan
- Innovative municipal planning to effectively manage growth in a manner consistent with Landscapes2
- Multi-municipal planning efforts that effectively address planning issues facing Chester County municipalities
- The use of professional planning expertise to address growth management and other planning issues at the municipal and multi-municipal level
- Funding to supplement the Chester County Planning Commission staff's ability to directly assist municipalities in the implementation of Landscapes2.

### *Is there a maximum amount?*

Up to \$50,000 for comprehensive plans, revitalization plans, open space plans, and ordinances which are adopted under the provisions of the MPC.

### *Is a match required?*

There is a local match minimum of 25%.

### *How to apply*

Information on applying to sell an agricultural conservation easement can be obtained by contacting the Chester County Planning Commission via phone, email, regular mail, or by visiting.

### *When is the application period?*

Application period is open.



## Private Foundation Programs

### WILLIAM PENN FOUNDATION

#### *Who is eligible to apply?*

Non-profit organizations. Governments are not generally funded, except in certain cases where there is no suitable tax-exempt organization to carry out a program or project.

#### *What types of projects are funded?*

- Develop and implement conservation and restoration models.
- Provide capital for land acquisition to promote conservation and protect water quality.
- Provide capital for stream restoration to restore water quality.
- Secure funds to complete “The Circuit,” Greater Philadelphia’s regional trail network.

### CHESTER COUNTY COMMUNITY FOUNDATION

<http://www.chescocf.org/grants/grants%20home.htm>

#### *Who is eligible to apply?*

Non-profits in Chester County.

#### *What types of projects are funded?*

Program and operating funds.

Capital and endowment campaigns.

Capacity-building proposals.

#### *Is there a maximum amount?*

Grant awards typically range from \$500 – \$7,500.

#### *Is a match required?*

No.

#### *How to apply*

Read the guidelines and complete the application available here:

<http://www.chescocf.org/grants/grants%20home.htm>

#### *When is the application period?*

Proposals may be submitted any time throughout the year.

## GEORGE AND MIRIAM MARTIN FOUNDATION

The focus of this foundation is river and watershed conservation. Visit <http://themartinfoundation.org/>

### *Who is eligible to apply?*

Non-profits in Chester County.

### *What types of projects are funded?*

There are no formal grant guidelines.

### *Is there a maximum amount?*

Grant awards typically range from \$1,000 – \$150,000.

### *Is a match required?*

No.

### *How to apply*

If you are interested in a grant, please send a brief letter describing how a grant will help your organization preserve streams and wetlands.

### *When is the application period?*

There are no deadlines.

## Corporate Programs

### PECO GREEN REGION GRANT

<http://www.natlands.org/services/for-municipalities/peco-green-region-program/>

#### *Who is eligible to apply?*

Any municipality within PECO's five-county service territory, including those in Chester County.

#### *What types of projects are funded?*

Developing or updating open space plans; improving municipal, organization, or authority-owned open spaces, including planning costs; acquisition of parcels to be used for open space; and acquisition of conservation easements.

#### *Is there a maximum amount?*

\$10,000.

#### *Is a match required?*

50% match.

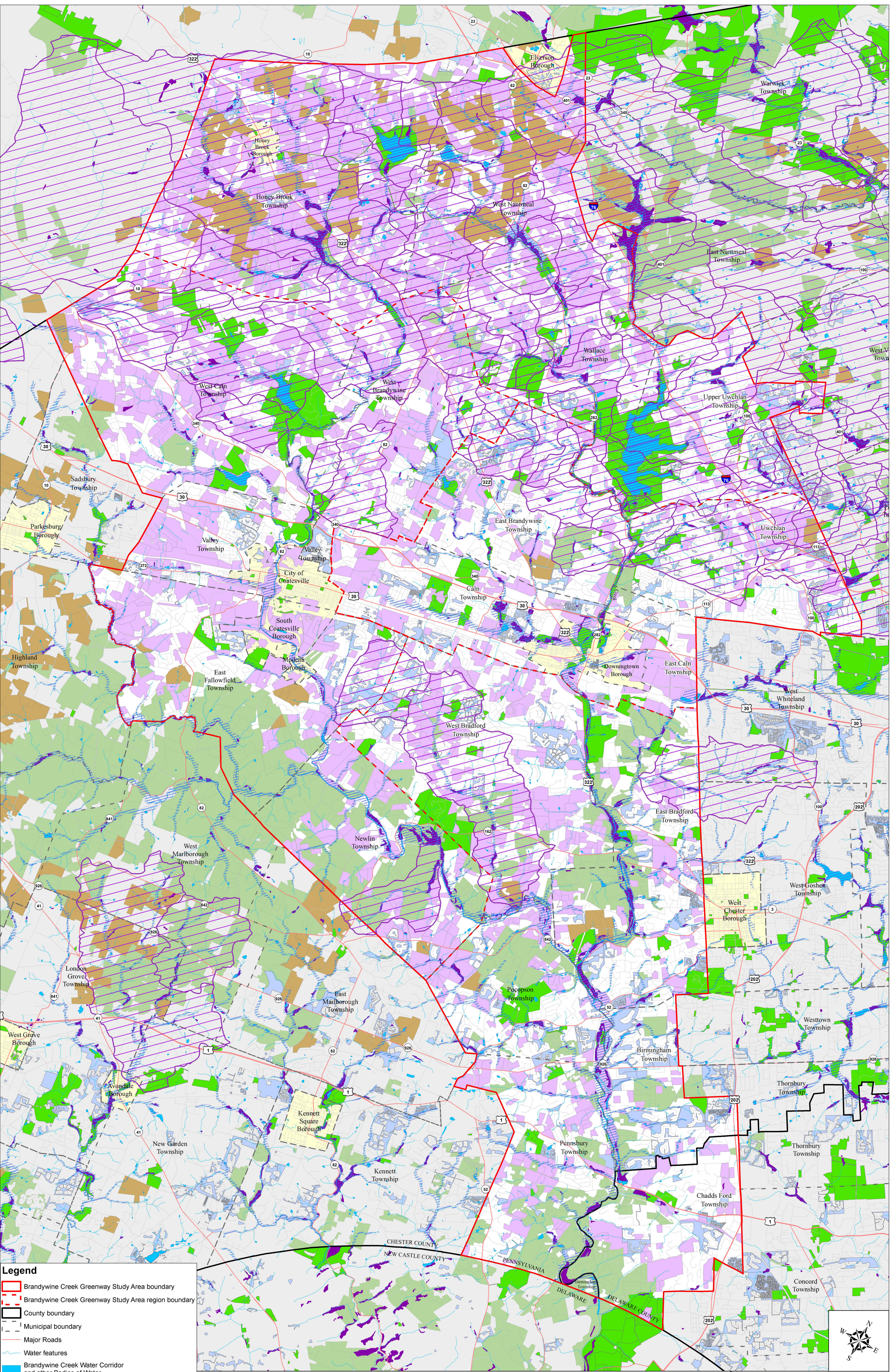
#### *How to apply*

Visit the website for more details: <http://www.natlands.org/services/for-municipalities/peco-green-region-program/>

#### *When is the application period?*

The latest deadline was December 31, 2013.





**\*DRAFT\* Water Resources Inventory Map \*DRAFT\***

## Brandywine Creek Greenway

0 0.5 1 2 3 4 Miles

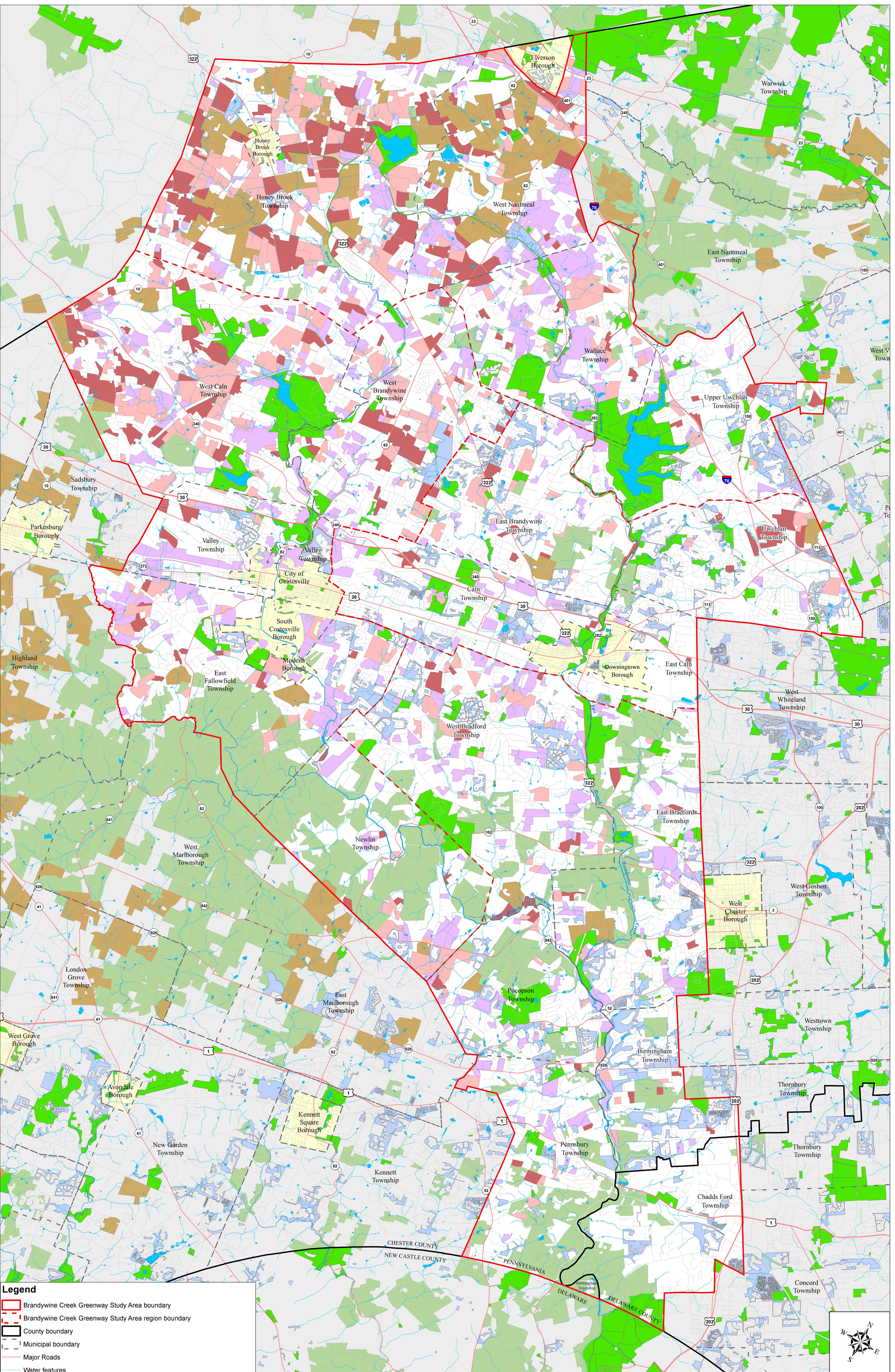
Data sources:  
Roads, Streams,  
Municipal boundaries  
Protected lands

-Chester County GIS Department, 2012.  
-Delaware County GIS Department, 2012.  
-Chester County Planning Commission, 2013.  
-Delaware County GIS Department, 2011.



Map created: July 24, 2013





Brandywine Creek Greenway Study Area boundary

Brandywine Creek Greenway Study Area region boundary

County boundary

Municipal boundary

Major Roads

Water features

Brandywine Creek Water Corridor and other Bodies of Water

Unprotected parcels 10 ac. and greater\*

Unprotected parcels 10 ac. and greater with >= 50% and < 75% prime ag. soils\*

Unprotected parcels 10 ac. and greater with >= 75% prime ag. soils\*

Chester County agricultural easements

Private lands eased or owned by land trusts

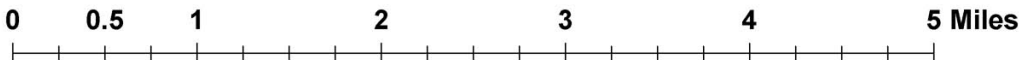
Other protected lands (HOA, etc.)

Public lands (Federal, state, county, municipal)

Notes: Only parcels with County Land Use designation of Agricultural, Farm, Vacant, or Residential

**\*DRAFT\* Agricultural Resources Inventory Map**

**Brandywine Creek Greenway**



Data sources:  
Roads, Streams,  
Municipal boundaries

Protected lands

-Chester County GIS Department, 2012.

-Delaware County GIS Department, 2012.

-Chester County Planning Commission, 2013.

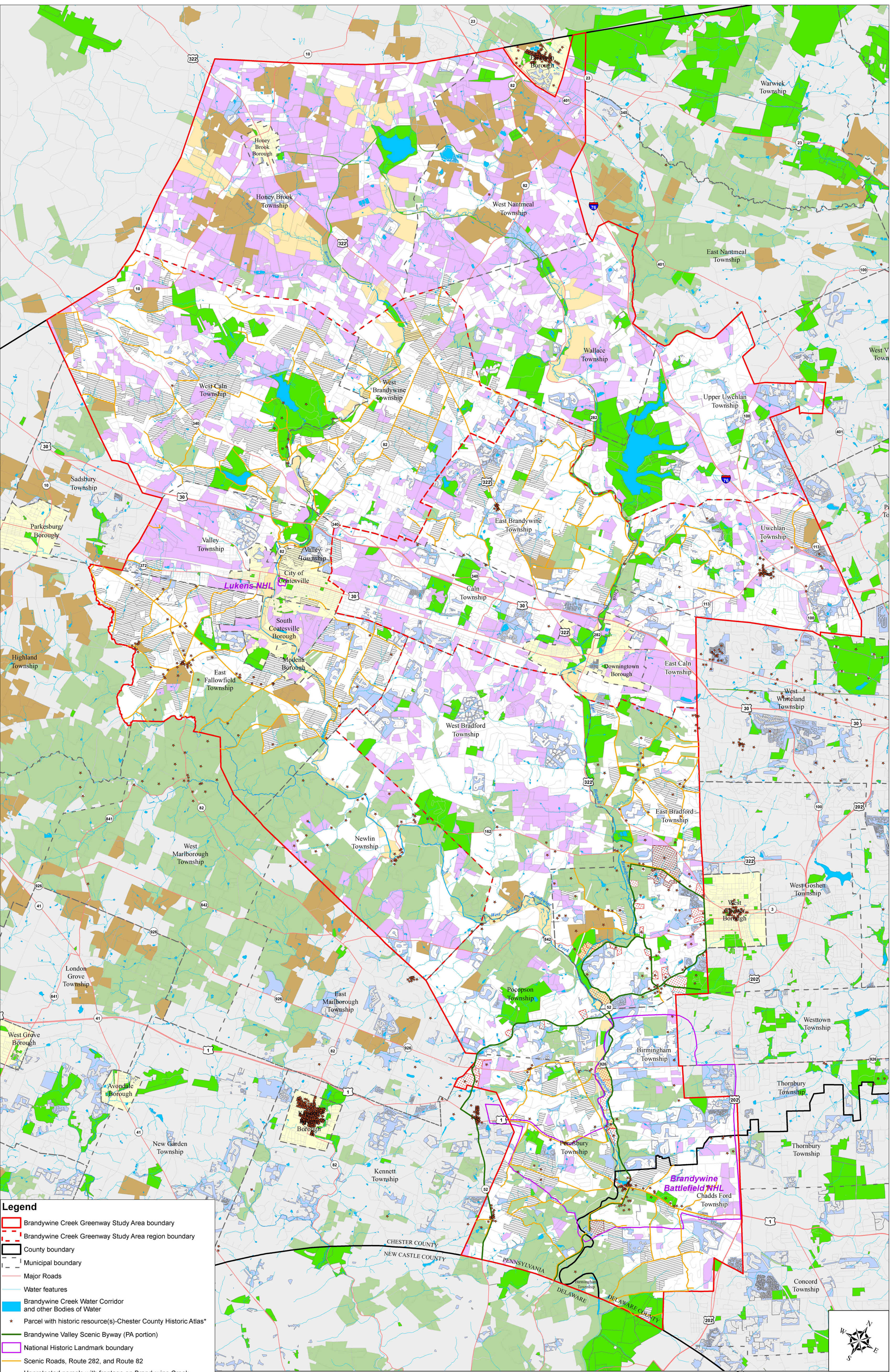
-Delaware County GIS Department, 2011.

BRANDYWINE CREEK  
Greenway

BRANDYWINE  
CONSERVANCY

Map created: July 24, 2013





**\*DRAFT\* Cultural Resources Inventory Map \*DRAFT\***

**Brandywine Creek Greenway**

\*Note: Star does not represent actual location of historic resource. Data source is from Chester County Historic Atlas, created by Chester County GIS dept. and is still in process of being updated. All resources shown are classified as Class 1, which are on or eligible for the National Register.



**Data sources:**  
Roads, Streams, Municipal boundaries  
Protected lands

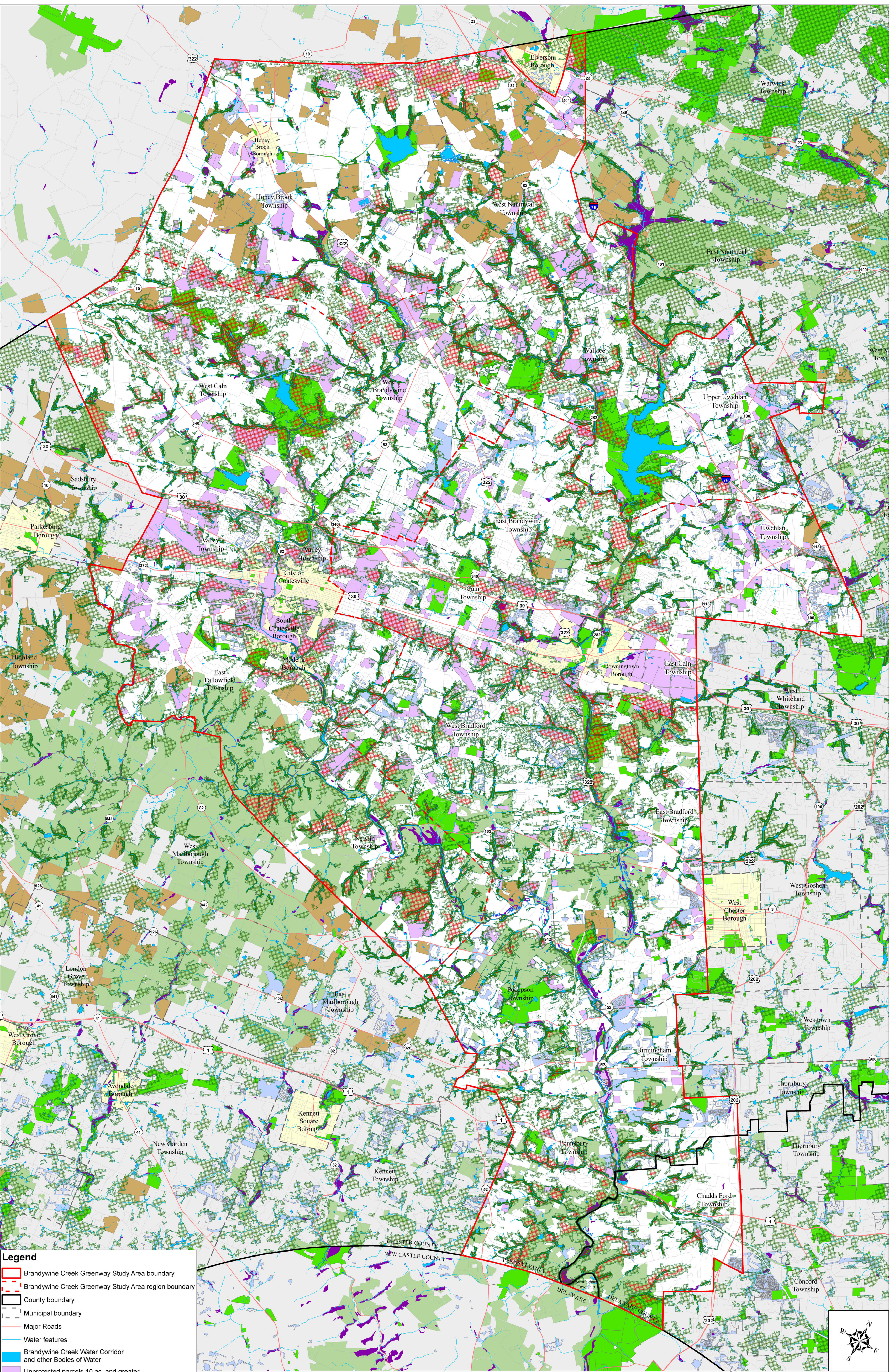
-Chester County GIS Department, 2012.  
-Delaware County GIS Department, 2012.  
-Chester County Planning Commission, 2013.  
-Delaware County GIS Department, 2011.

**BRANDYWINE CREEK Greenway**

**BRANDYWINE CONSERVANCY**

Map created: July 24, 2013





**\*DRAFT\* Natural Resources Inventory Map \*DRAFT\***

## Brandywine Creek Greenway

0 0.5 1 2 3 4 Miles

Data sources:  
Roads, Streams,  
Municipal boundaries  
Protected lands

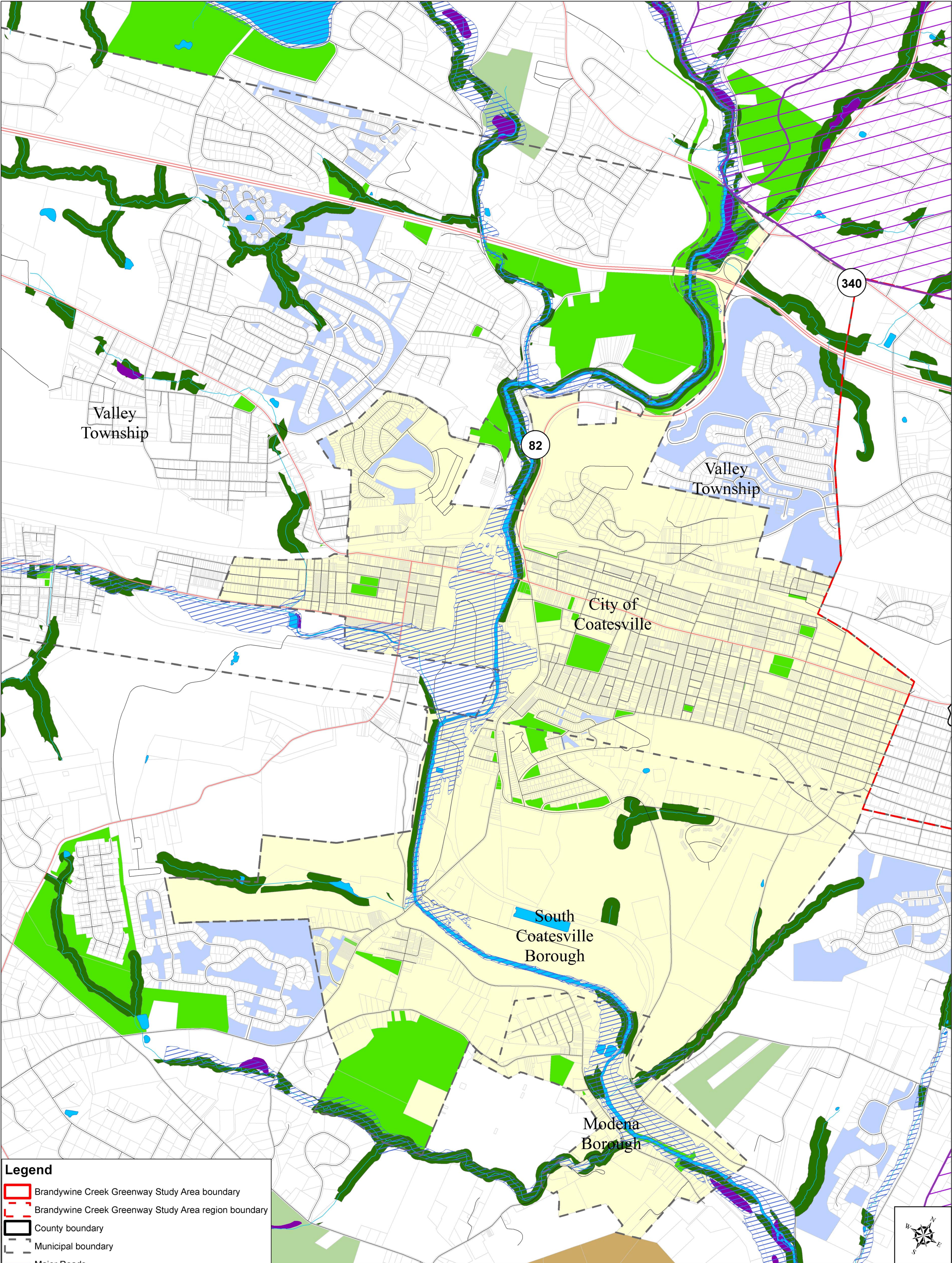
-Chester County GIS Department, 2012.  
-Delaware County GIS Department, 2012.  
-Chester County Planning Commission, 2013.  
-Delaware County GIS Department, 2011.



BRANDYWINE  
CONSERVANCY

Map created: July 24, 2013





**Legend**

- Brandywine Creek Greenway Study Area boundary
- Brandywine Creek Greenway Study Area region boundary
- County boundary
- Municipal boundary
- Major Roads
- Unclassified Water features
- Brandywine Creek Water Corridor and other Bodies of Water
- NWI Wetlands
- 100-year floodplain
- Tax parcels
- Special Protection Watersheds (EV/HQ)
- Chester County agricultural easements
- Private lands eased or owned by land trusts
- Other protected lands (HOA, etc.)
- Public lands(Federal, state, county, municipal)

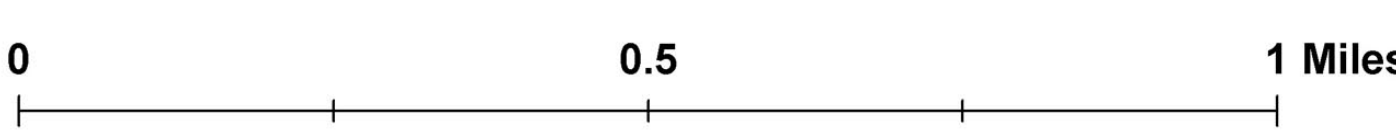
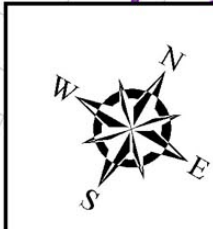
# **\*DRAFT\* Water Resouces Inventory Map**



## City of Coatesville, South Coatesville Borough, Modena Borough

### Brandywine Creek Greenway

**Data sources:**

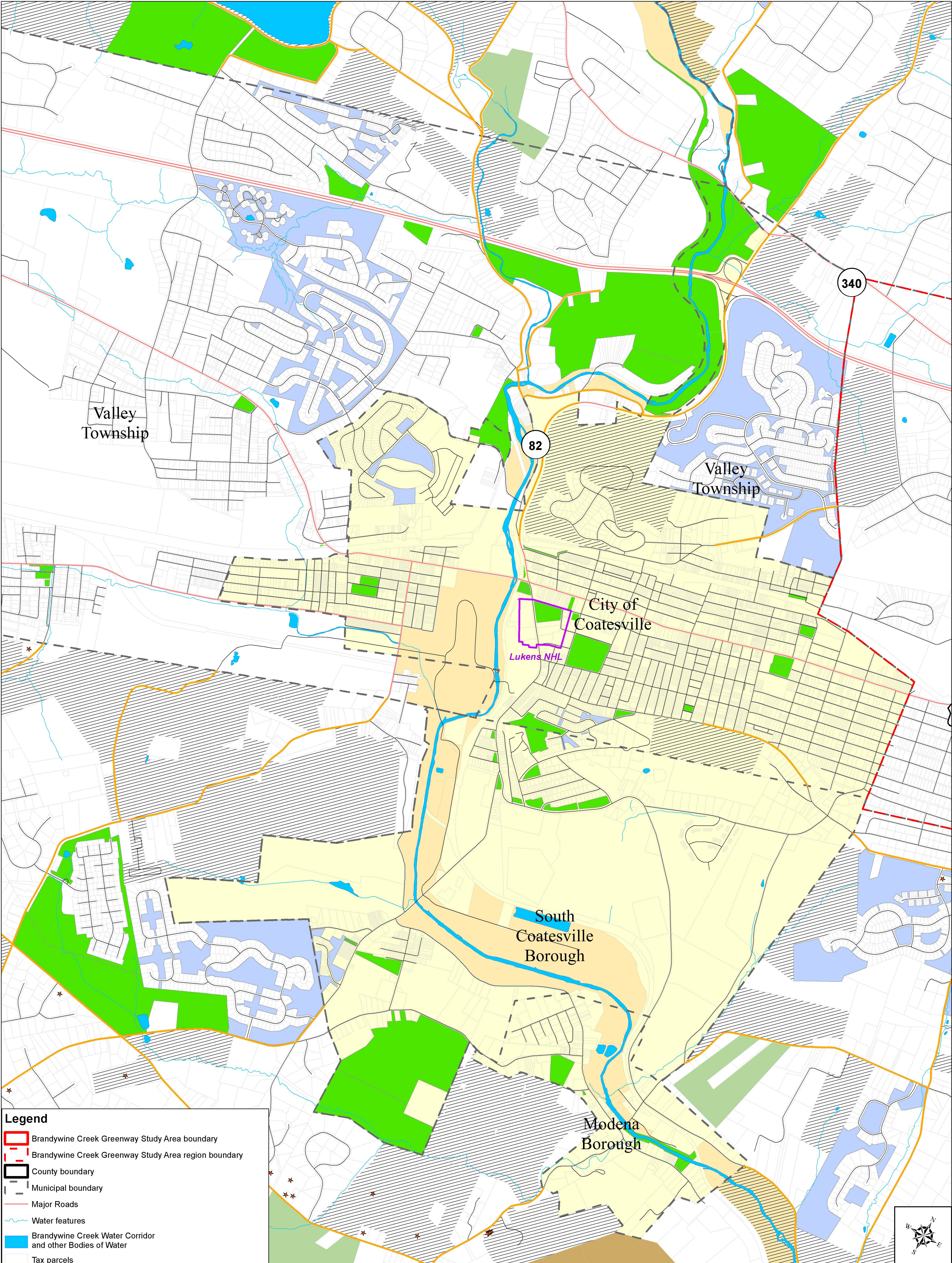
- Roads, Streams, Municipal boundaries
- Protected lands
- Chester County GIS Department, 2012.
- Delaware County GIS Department, 2012.
- Chester County Planning Commission, 2013.
- Delaware County GIS Department, 2011.





Map created: March 19, 2014





- Legend**
- Brandywine Creek Greenway Study Area boundary
  - Brandywine Creek Greenway Study Area region boundary
  - County boundary
  - Municipal boundary
  - Major Roads
  - Water features
  - Brandywine Creek Water Corridor and other Bodies of Water
  - Tax parcels
  - Parcel with historic resource(s)-Chester County Historic Atlas\*
  - Brandywine Valley Scenic Byway (PA portion)
  - National Historic Landmark boundary
  - Scenic Roads, Route 282, and Route 82
  - Unprotected parcels with frontage on Brandywine Creek (10 ac. and greater or with vacant land use)
  - Unprotected parcels 10 ac. and greater adjacent to Brandywine Scenic Byway
  - Unprotected parcels 10 ac. and greater adjacent to scenic roads
  - Chester County agricultural easements
  - Private lands eased or owned by land trusts
  - Other protected lands (HOA, etc.)
  - Public lands(Federal, state, county, municipal)

**\*DRAFT\* Cultural Resources Inventory Map**

City of Coatesville, South Coatesville Borough, Modena Borough  
Brandywine Creek Greenway

\*Note: Star does not represent actual location of historic resource. Data source is from Chester County Historic Atlas, created by Chester County GIS dept. and is still in process of being updated. All resources shown are classified as Class 1, which are on or eligible for the National Register.

**Data sources:**  
Roads, Streams, Municipal boundaries  
Protected lands

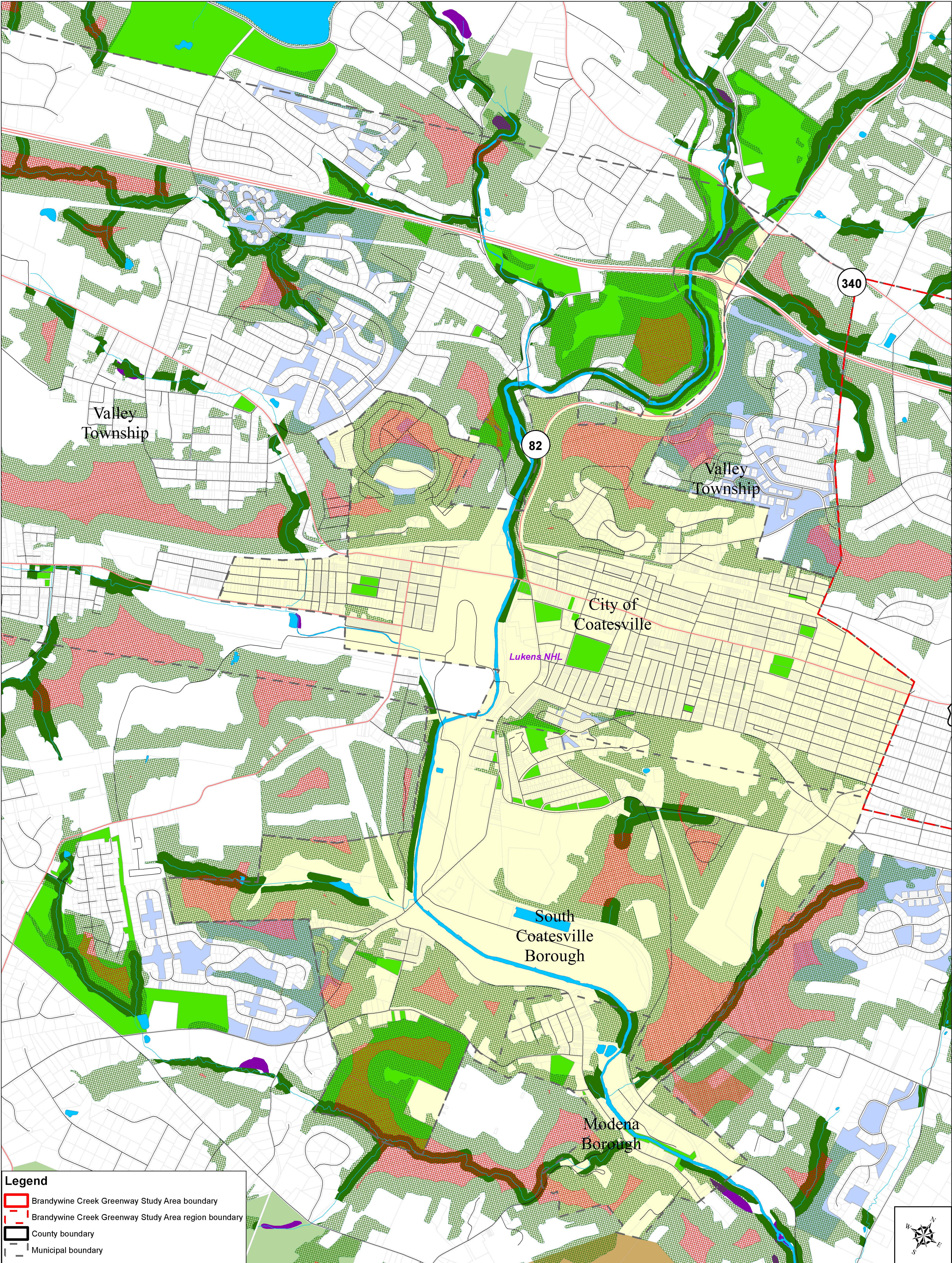
-Chester County GIS Department, 2012.  
-Delaware County GIS Department, 2012.  
-Chester County Planning Commission, 2013.  
-Delaware County GIS Department, 2011.

**BRANDYWINE CREEK Greenway**

**BRANDYWINE CONSERVANCY**

Map created: March 19, 2014





- Legend**
- Brandywine Creek Greenway Study Area boundary
  - Brandywine Creek Greenway Study Area region boundary
  - County boundary
  - Municipal boundary
  - Major Roads
  - Water features
  - Brandywine Creek Water Corridor and other Bodies of Water
  - Tax parcels
  - NWI Wetlands
  - Forested Riparian Buffer
  - Woodlands
  - Woodland interior
  - Chester County agricultural easements
  - Private lands eased or owned by land trusts
  - Other protected lands (HOA, etc.)
  - Public lands(Federal, state, county, municipal)

## **\*DRAFT\* Natural Resources Inventory Map**

City of Coatesville, South Coatesville Borough, Modena Borough  
Brandywine Creek Greenway

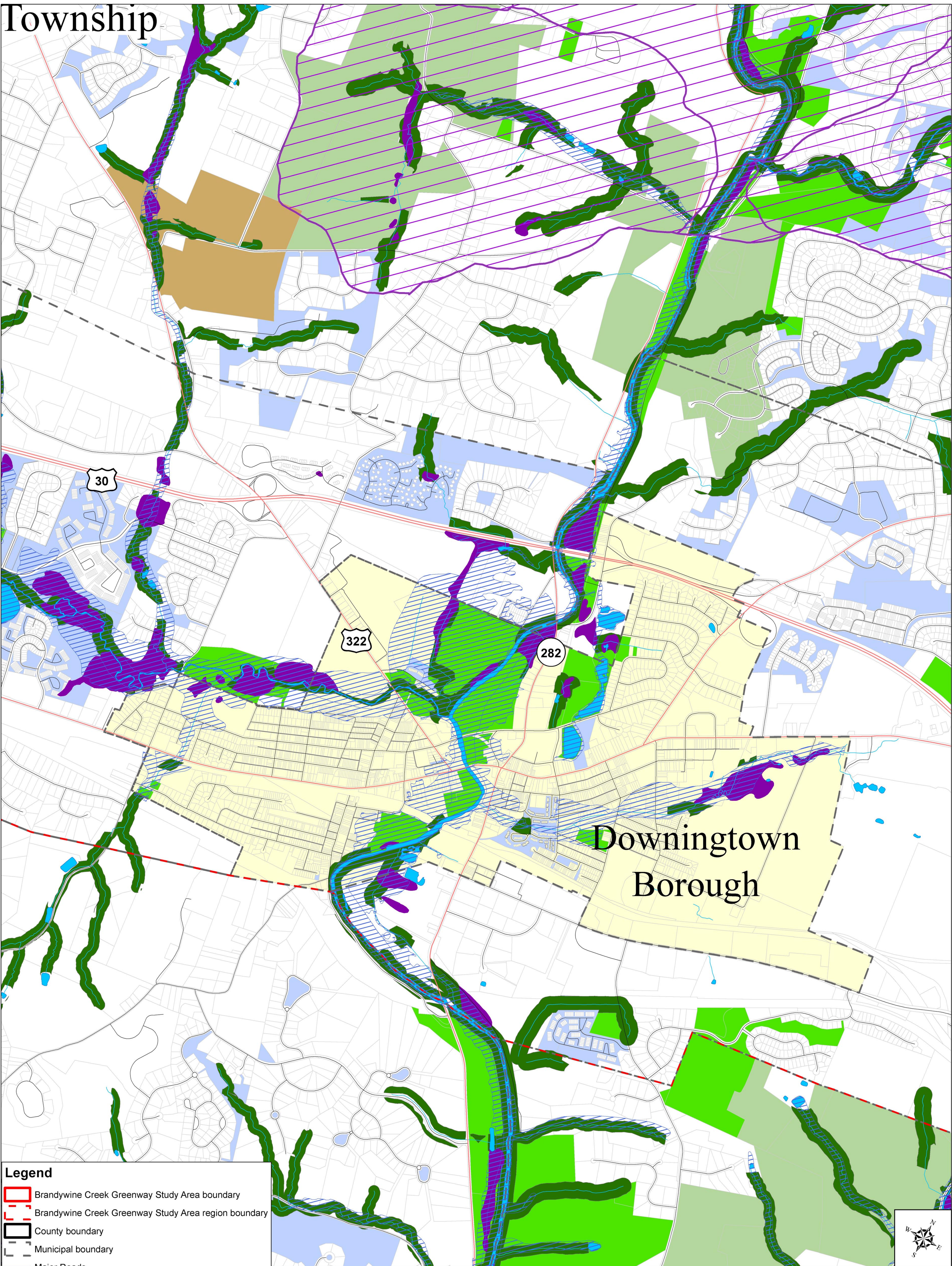
0 0.5 1 Miles

**Data sources:**  
Roads, Streams,  
Municipal boundaries  
Protected lands



Map created: March 19, 2014





- Legend**
- Brandywine Creek Greenway Study Area boundary
  - Brandywine Creek Greenway Study Area region boundary
  - County boundary
  - Municipal boundary
  - Major Roads
  - Unclassified Water features
  - Brandywine Creek Water Corridor and other Bodies of Water
  - NWI Wetlands
  - 100-year floodplain
  - Tax parcels
  - Special Protection Watersheds (EV/HQ)
  - Chester County agricultural easements
  - Private lands eased or owned by land trusts
  - Other protected lands (HOA, etc.)
  - Public lands(Federal, state, county, municipal)

**\*DRAFT\* Water Resouces Inventory Map**

Downingtown Borough  
Brandywine Creek Greenway

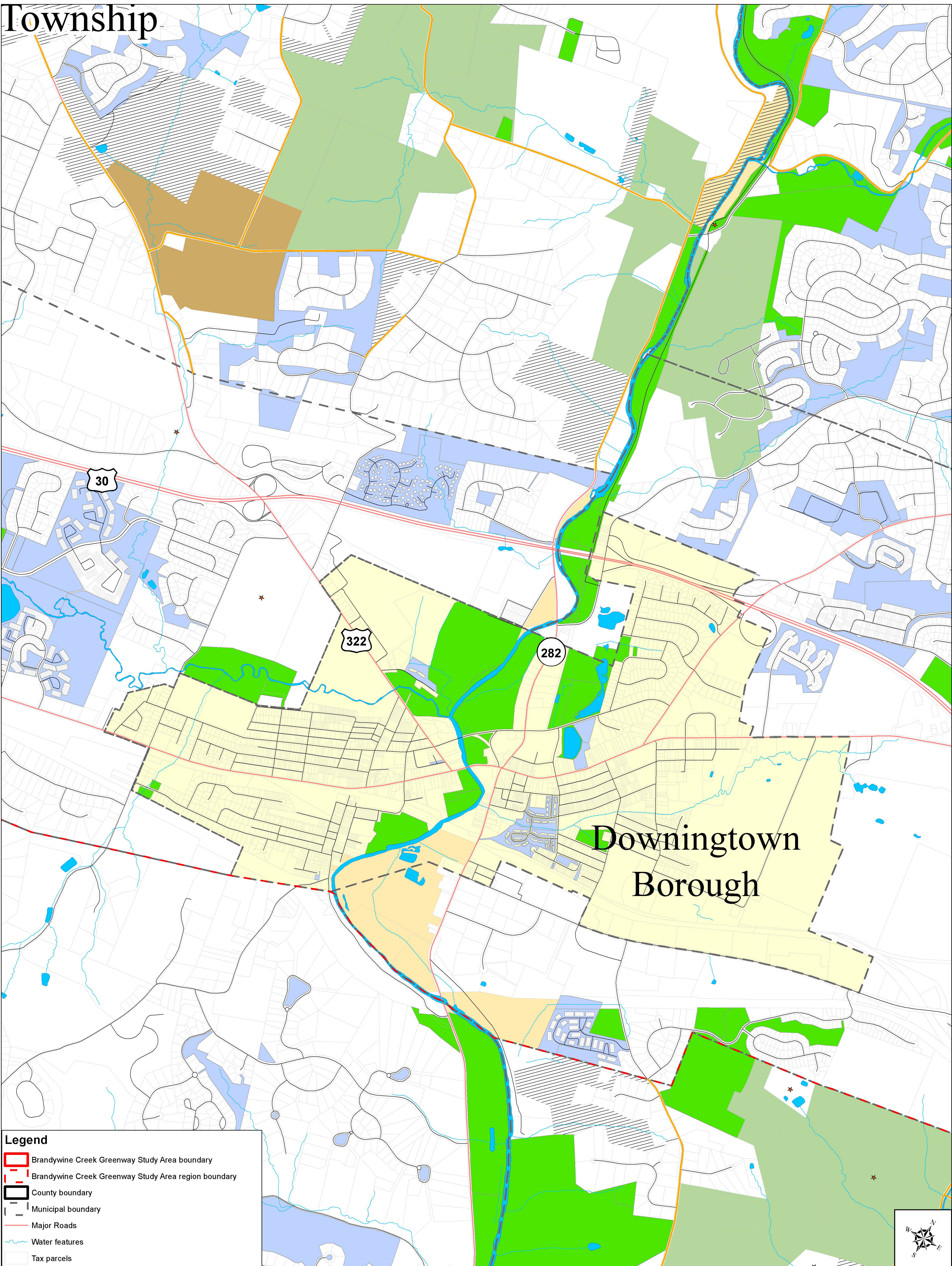
0 0.5 1 Miles

**Data sources:**  
Roads, Streams,  
Municipal boundaries  
Protected lands

-Chester County GIS Department, 2012.  
-Delaware County GIS Department, 2012.  
-Chester County Planning Commission, 2013.  
-Delaware County GIS Department, 2011.







- Legend**
- Brandywine Creek Greenway Study Area boundary
  - Brandywine Creek Greenway Study Area region boundary
  - County boundary
  - Municipal boundary
  - Major Roads
  - Water features
  - Tax parcels
  - Brandywine Creek Water Corridor and other Bodies of Water
  - Parcel with historic resource(s)-Chester County Historic Atlas\*
  - Brandywine Valley Scenic Byway (PA portion)
  - Scenic Roads, Route 282, and Route 82
  - Unprotected parcels 10 ac. and greater adjacent to scenic roads
  - Unprotected parcels with frontage on Brandywine Creek (10 ac. and greater or with vacant land use)
  - Unprotected parcels 10 ac. and greater adjacent to Brandywine Scenic Byway
  - Chester County agricultural easements
  - Private lands eased or owned by land trusts
  - Other protected lands (HOA, etc.)
  - Public lands(Federal, state, county, municipal)

**\*DRAFT\* Cultural Resouces Inventory Map**

Downingtown Borough  
Brandywine Creek Greenway

\*Note: Star does not represent actual location of historic resource. Data source is from Chester County Historic Atlas, created by Chester County GIS dept. and is still in process of being updated. All resources shown are classified as Class 1, which are on or eligible for the National Register.

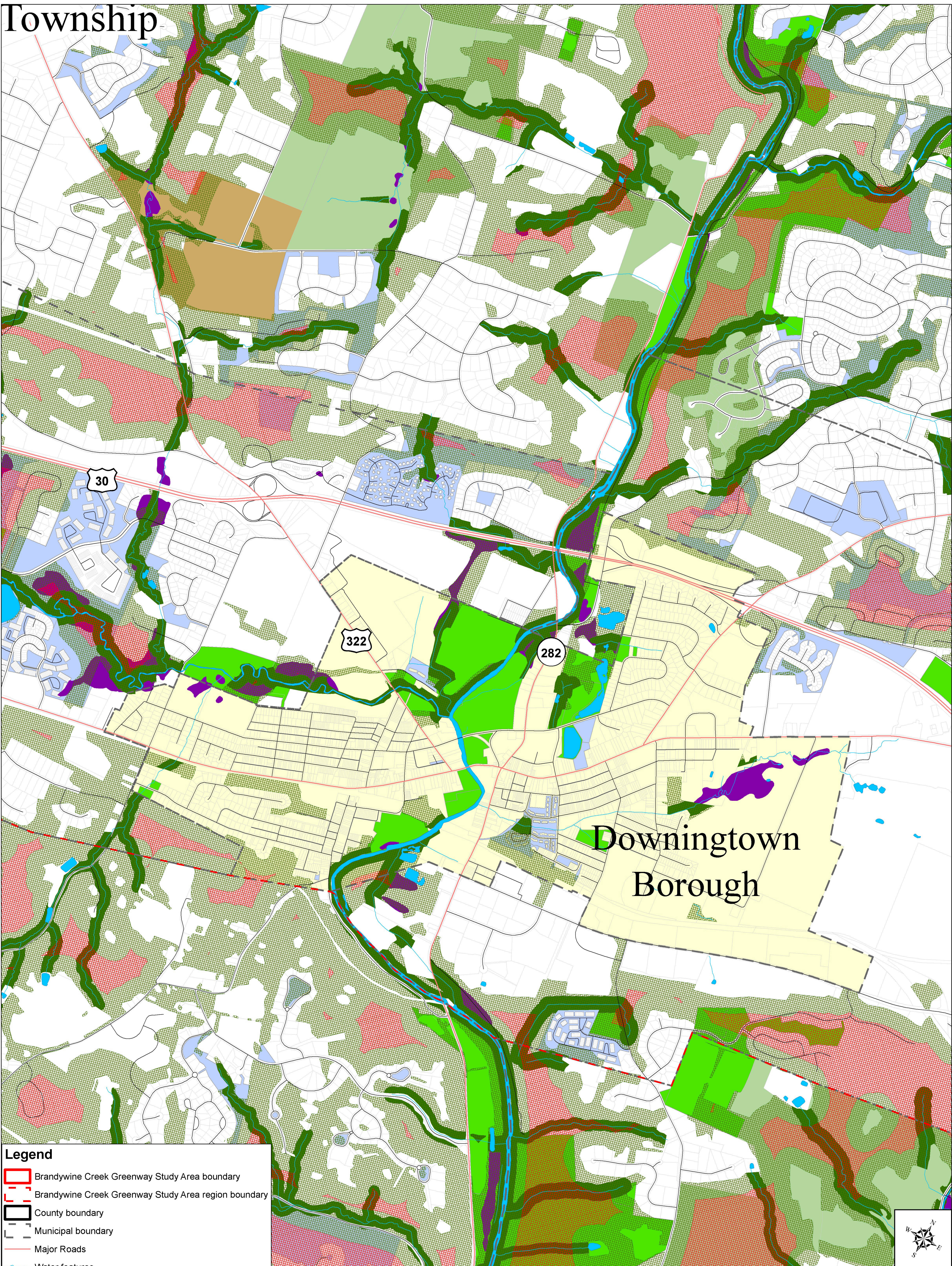
0 0.5 1 Miles

**Data sources:**  
Roads, Streams, Municipal boundaries  
Protected lands  
-Chester County GIS Department, 2012.  
-Delaware County GIS Department, 2012.  
-Chester County Planning Commission, 2013.  
-Delaware County GIS Department, 2011.





# Township



**Legend**

Brandywine Creek Greenway Study Area boundary

Brandywine Creek Greenway Study Area region boundary

County boundary

Municipal boundary

Major Roads

Water features

Tax parcels

Brandywine Creek Water Corridor and other Bodies of Water

NWI Wetlands

Woodland interior

Woodlands

Forested Riparian Buffer

Chester County agricultural easements

Private lands eased or owned by land trusts

Other protected lands (HOA, etc.)

Public lands(Federal, state, county, municipal)

## \*DRAFT\* Natural Resources Inventory Map

Downingtown Borough  
Brandywine Creek Greenway

0 0.5 1 Miles

**Data sources:**  
Roads, Streams,  
Municipal boundaries  
Protected lands  
-Chester County GIS Department, 2012.  
-Delaware County GIS Department, 2012.  
-Chester County Planning Commission, 2013.  
-Delaware County GIS Department, 2011.



Map created: March 19, 2014