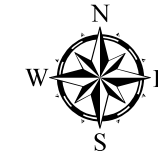


Downingtown Borough

East Caln Township

Caln Township



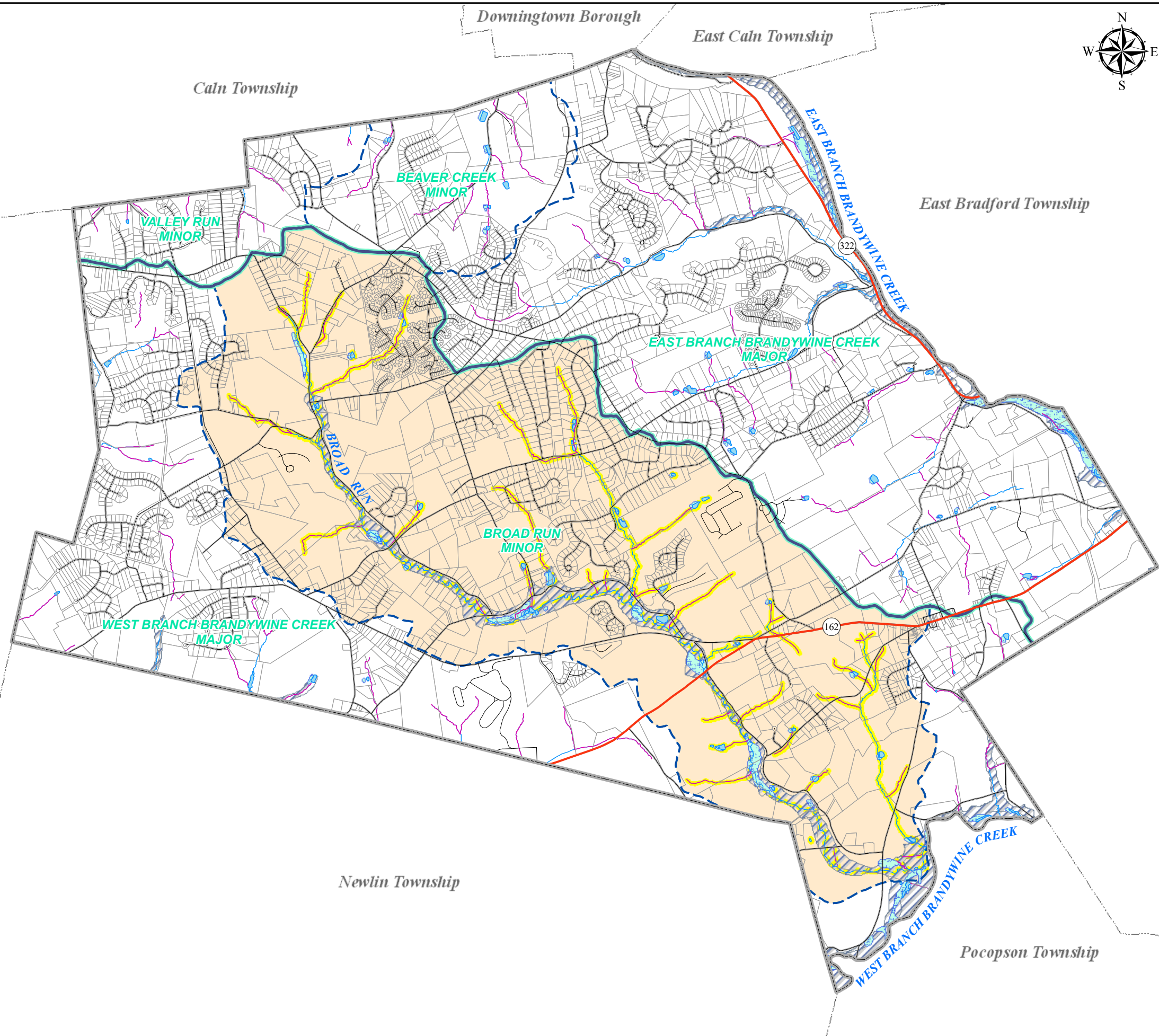
West Bradford Township

Comprehensive Plan



Water Resources Map 4-4

East Bradford Township



Newlin Township

Pocopson Township

Legend

- Major roads
- Roads
- First order streams
- Streams
- Bodies of water
- Drainage divide - East & West Branches, Brandywine Creek
- N.W.I. Wetlands
- Floodplain (100 yr.)
- Exceptional value streams
- Tax parcels
- Adjacent municipal boundaries
- Township boundary
- Watershed boundaries**
- Minor watersheds
- Exceptional value watershed



 **Brandywine Conservancy**
 Environmental Management Center
 P.O. Box 141 Chadds Ford, Pennsylvania 19317 (610) 388-2700

DATA SOURCE: Base data from Chester County GIS Department, 2009. Roads from West Bradford Township, 1/2009. Wetlands from NRCS, 1994. Hydric soils from NRCS, 2007. Floodplains from FEMA, 2006. Exceptional value streams from Chester County, 2007. Minor watersheds from USGS, 1996.

Date: March 6, 2009