

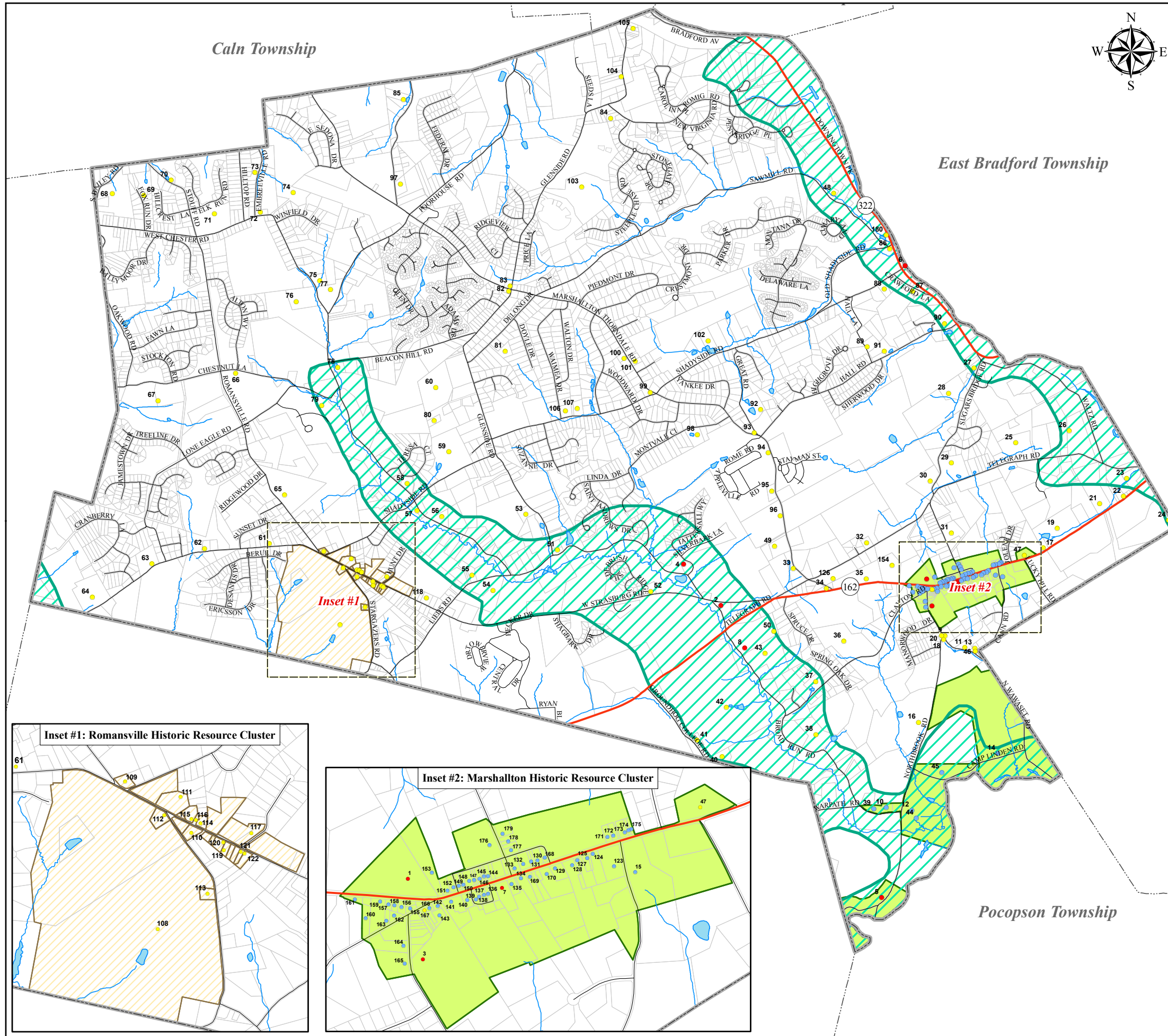
West Bradford Township

Comprehensive Plan



Historic Resources

Map 1-1



Legend

- Major roads
- Roads
- Streams
- Bodies of water
- Tax parcels
- Adjacent municipal boundaries
- Township boundary
- National Register Historic District
- Romansville Historic Resource Cluster
- Lower Brandywine Scenic River Corridor

Historic resources

- Contributing historic site within boundary of National Historic District
- Site on National Register
- Local historic resource site



 **Brandywine Conservancy**
 Environmental Management Center
 P.O. Box 141 Chadds Ford, Pennsylvania 19317 (610) 388-2700

DATA SOURCE: Base data from Chester County GIS Department, 2009. Roads from West Bradford Township, 1/2009. Historic resources and resource areas from West Bradford Township, 1/2009. Lower Brandywine Scenic River Corridor designated by Commonwealth of Pennsylvania, 1989 (digitized from "Lower Brandywine Scenic Rivers Evaluation and Management Study" by Brandywine Conservancy, 6/2009).

Date: March 6, 2009